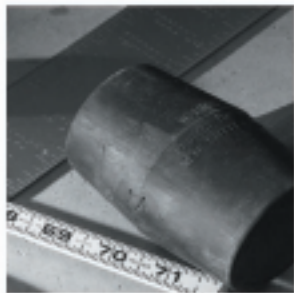
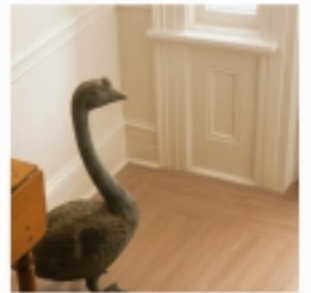
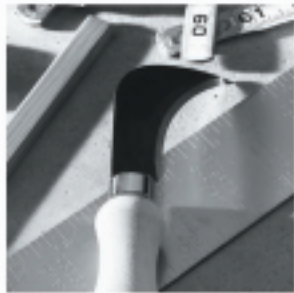
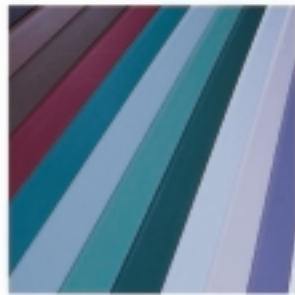
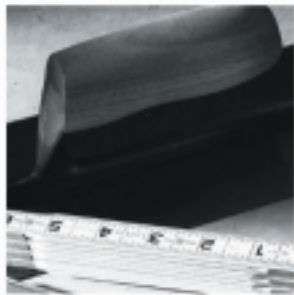
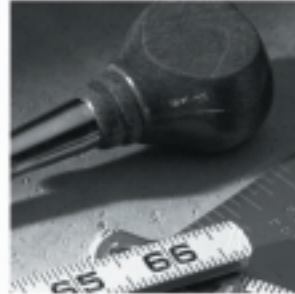
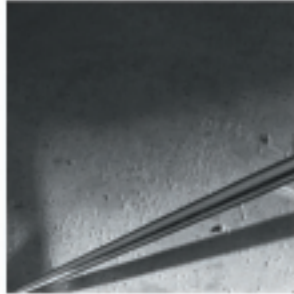


BEAUTIFUL
DURABLE
AFFORDABLE
NAFCO
LUXURY VINYL
FLOORING



NAFCO
Installation &
Maintenance
Manual

TABLE OF CONTENTS

Introduction and Emergency Response Warning	2
Product Characteristics	3
Product Data	4
Adhesive and Subfloor Specifications	5
Adhesive Descriptions	5
Subfloor and Underlayment Requirements	11
Product Installation Instructions	13
Tile	13
Special Design Options and Formulas	16
Plank	18
Wall base	20
Maintenance Information	21
Residential Applications	21
Light Commercial Applications	22
Commercial Applications	23
General Recommendations	25
Floor Care Products and Directions	26
Stain Removal Chart	28
Architectural Specifications	29
Warranties	30
Frequently Asked Questions	31

NOTE: This manual supercedes prior manuals produced for the NAFCO products.

INTRODUCTION

For over 40 years NAFCO's Luxury Vinyl Flooring has lead the industry in quality and innovation. NAFCO's products have been designed to accurately and beautifully depict the look of stone, marble, ceramic, slate and wood. Vinyl flooring is now better than ever. It's durable, affordable and beautiful. More than ever our homes have become a retreat from the hectic, fast paced world. We want products that not only enhance the beauty of our homes, but that are durable and easy to maintain. We have over 250 SKU's with our 26 lines making selection and design possibilities endless. Many of our products feature NAFCO's exclusive Tritonite™ wearlayer, a revolutionary ceramic technology made of millions of ceramic microspheres. These microspheres are embedded right in the urethane wearlayer. Our floors resist scuffs and abrasion up to five times better than a traditional wear surface. Luxury vinyl has never been tougher or longer lasting than this.

IMPORTANT NOTICE

Safety is everyone's responsibility. Warnings and instructions set forth in this manual and incorporated on DOMCO TARKETT resilient flooring accessory labels should be strictly followed. When adhesives or other materials are to be used in the workplace, obtain these products' Material Safety Data Sheets from their supplier.

WARNING

WARNING REGARDING COMPLETE REMOVAL OF EXISTING RESILIENT FLOORING ADHESIVE

Some existing resilient flooring and solvent-based cutback asphalt adhesives may contain asbestos fibers that are not readily identifiable. Do not sand, dry scrape, bead blast or mechanically pulverize existing resilient flooring, backing or lining felt. Do not use power devices when removing existing flooring or asphalt adhesives. The inhalation of asbestos dust may cause asbestosis or other serious bodily harm. Smoking greatly increases these risks.

EMERGENCY RESPONSE

For DOMCO TARKETT adhesives, underlayment and maintenance products please call the 24-hour medical and DCT emergency response communications. For information on hazardous materials within these products call:

IN USA: 1-800-228-5635 Extension 079

IN CANADA: 1-613-996-6666

NOTICE

Various Federal, State and local government agencies have regulations covering the removal of asbestos-containing material. If you are considering the removal of resilient floor covering that contains, or is assumed to contain, asbestos, you should determine if these regulations apply. The Resilient Floor Covering Institute Recommended Work Practices are designed to comply with the federal occupational asbestos exposure limits. Many local regulations have additional restrictions over that required by Federal agencies. The need to follow these regulations should be determined prior to removal of any possible asbestos containing material. Individual copies of the Resilient Floor Covering Institute Recommended Work Practices are available free of charge by writing:

Resilient Floor Covering Institute
966 Hungerford Drive, Suite 12-B
Rockville, MD 20850

OR

NAFCO
Installation Services Department
P.O. Box 354
Florence, Alabama, USA, 35631
NafcoTech@DomcoTarkett.com

PRODUCT CHARACTERISTICS

Construction:

Tritonite™: NAFCO products feature a high-tech urethane coating with ceramic microspheres for superior durability, scuff resistance, and appearance retention.

Natural Color Variations:

NAFCO tiles are manufactured to reflect natural material and as such there will be a slight variation in the color and marbelization appearance of each tile. We cannot honor any claim regarding lack of uniformity due to shade and/or color.

We suggest that the tiles be laid out on the subfloor, before adhesive is applied, so that the appearance can be seen and any adjustment of the tile positions can be made in an effort to achieve the desired effect before installation.

Special Edge Treatments:

Beveled Edges: Many NAFCO tiles feature a beveled and stained edge, which creates an additional design element. These tiles are beveled along the perimeter of the product. Some NAFCO products are also available with an interior-stained bevel.

Two-Sided Grout Lines (GroutFit™): Some NAFCO tiles feature two-sided grout lines that minimize the appearance of tile seams. Tiles must always be placed with grout lines in the same direction.

Rolled Edges: Some NAFCO products feature a gently rolled edge which closely approximates the natural product. Caution should be used when cutting these products; be sure to place cut edges against walls and rolled edges against rolled edges.

Application Definitions:

Residential: All common areas in a home or apartment.

Light Commercial: Private offices, reception areas, areas in public buildings or businesses that are not subject to frequent or harsh traffic.

Commercial: Hospital and health care patient areas and corridors, schools, public buildings, libraries, banks, supermarkets, automobile showrooms, industrial buildings, etc.

Samples:

Samples are cut from standard tiles and therefore, do not correspond EXACTLY to the pattern on the whole tile. Samples and printed swatches may vary from actual production runs. For critical color and gloss matches, please check the actual production runs at your nearest NAFCO dealer.

NAFCO Luxury Flooring

PRODUCT DATA

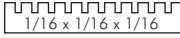
ALL THE DETAILS	Tritonite Wearlayer	Gauge	Size	Gloss Level	Edge Treatment	Available in Quik-Stik	EXP Residential Warranty	*Residential	**5-Yr Light Commercial Warranty	***10-Yr Commercial Warranty	Sq. Ft. Per Carton	Pieces Per Carton Dri-Back	Pieces Per Carton Quik-Stik	Pounds Per Carton	Cartons Per Pallet
Best Living Collection															
Crestview Plank	•	1/8"	3"x36"	Matte	Rolled		30-Year	•	•	•	27	36		34	50
Madras Slate	•	1/8"	12"x12"	Matte	Beveled		30-Year	•	•	•	45	45		52	54
Roman Stone	•	1/8"	12"x12"	Matte	Rolled		30-Year	•	•	•	45	45		52	54
Better Living Collection															
PermaStone – Tumbled Marble	•	1/8"	16"x16"	Matte	Two-Sided Grout		20-Year	•	•		26.7	15		32	60
PermaStone – Glaze	•	1/8"	16"x16"	Matte	Two-Sided Grout		20-Year	•	•		26.7	15		32	60
PermaStone – Earth Scape	•	1/8"	16"x16"	Matte	Two-Sided Grout		20-Year	•	•		26.7	15		32	60
PermaStone – Ceramic	•	1/8"	16"x16"	Matte	Two-Sided Grout		20-Year	•	•		26.7	15		32	60
PermaStone – Classic Black & White	•	1/8"	16"x16"	Matte	Two-Sided Grout		20-Year	•	•		26.7	15		32	60
PermaStone – Classic Black & White	•	1/8"	12"x12"	Matte	Two-Sided Grout		20-Year	•	•		27	27		33	81
PermaStone – Classic Black & White	•	1/8"	9"x9"	Matte	Two-Sided Grout		20-Year	•	•		27	48		33	80
Amherst Marble	•	1/8"	12"x12"	High	Beveled	•	20-Year	•	•		45	45	25	52	54
Antique Plank	•	1/8"	6"x36"	Matte	Rolled		20-Year	•	•		27	18		34	50
Augusta Plank	•	1/8"	3"x36"	Matte	Rolled		20-Year	•	•		27	36		34	50
Breccia Carsica	•	1/8"	12"x12"	Matte	Rolled	•	20-Year	•	•		27	27	27	31	81
Brook Pebbles	•	1/8"	12"x12"	Matte	Beveled	•	20-Year	•	•		45	45	25	52	54
Classic Plank	•	1/8"	3"x36"	Matte	Rolled		20-Year	•	•		27	36		34	50
Crackled Porcelain	•	1/8"	12"x12"	Matte	Two-Sided Grout		20-Year	•	•		27	27		31	81
Custom Quarry	•	1/8"	12"x12"	Matte	Beveled	•	20-Year	•	•		45	45	25	52	54
Designer Slate	•	1/8"	12"x12"	High	Square	•	20-Year	•	•		45	45	25	52	54
Dorchester Plank	•	1/8"	6"x36"	Matte	Rolled		20-Year	•	•		27	18		34	50
Elements	•	1/8"	12"x12"	Matte	Two-Sided Grout		20-Year	•	•		27	27		31	81
Elements	•	1/8"	9"x9"	Matte	Two-Sided Grout		20-Year	•	•		27	48		31	64
Flections	•	1/8"	12"x12"	High	Beveled	•	20-Year	•	•		45	45	25	52	54
Highland Oak	•	1/8"	3"x36"	High	Rolled		20-Year	•	•		27	36		34	50
Jackson Pecan	•	1/8"	12"x12"	Matte	Beveled	•	20-Year	•	•		45	45	25	52	54
Lorraine Oak	•	1/8"	3"x36"	Matte	Rolled		20-Year	•	•		27	36		34	50
Majestic Slate	•	1/8"	12"x12"	High	Square	•	20-Year	•	•		45	45	25	53	54
Milestone	•	1/8"	12"x12"	Matte	Beveled	•	20-Year	•	•		45	45	25	52	54
Navona Stone	•	1/8"	12"x12"	Matte	Beveled	•	20-Year	•	•		27	27	27	31	81
Victorian Marble	•	1/8"	12"x12"	High	Beveled	•	20-Year	•	•		45	45	25	52	54
Good Living Series															
Wood 4"		.080"	4"x36"	Matte	Square		15-Year	•			27	27		20	108
Wood 6"		.080"	6"x36"	Matte	Square		15-Year	•			27	18		20	108
Slate		.080"	12"x12"	Matte	Square		15-Year	•			27	27		20	99
Stone		.080"	12"x12"	Matte	Square		15-Year	•			27	27		20	99

* **Residential:** All common areas in the home or apartment.

** **Light Commercial:** Private offices, reception areas, areas in public buildings or businesses that are not subject to frequent and harsh traffic.

*** **Commercial:** Hospital and health care patient areas and corridors, schools, public buildings, libraries, banks, supermarkets, automobile showrooms, industrial buildings, elevators, gymnasiums, etc.

ADHESIVE AND SUBFLOOR SPECIFICATIONS

SELECTION CHART				
SPREADER 1/16" X 1/16" X 1/16" SQUARE-NOTCHED TROWEL 				
PRODUCT	Suspended, On-Grade & Below-Grade Concrete	APA Approved Plywood	Radiant Heated Floors	Existing Resilient Floors Residential Only
12 x 12	#800 Dry Set	#800 Dry Set	#400 Wet Set	#800 Dry Set
Quick-Stik Tile	Quick-Stik	Quick-Stik	Not Recommended	Quick-Stik
9 x 9	#800 Dry Set	#800 Dry Set	#400 Wet Set	#800 Dry Set
Quick-Stik Tile	Quick-Stik	Quick-Stik	Not Recommended	Quick-Stik
16 x 16 Tile	#800 Dry Set	#800 Dry Set	#400 Wet Set	#800 Dry Set
3 x 36 Plank	#400 Wet Set	#400 Wet Set	#400 Wet Set	#850 Residential Only
4 x 36 Plank	#400 Wet Set	#400 Wet Set	#400 Wet Set	#850 Residential Only
6 x 36 Plank	#400 Wet Set	#400 Wet Set	#400 Wet Set	#850 Residential Only
Combination Tile & Plank	#400 Wet Set	#400 Wet Set	#400 Wet Set	#850 Residential Only

IMPORTANT: All installations must be rolled with a minimum 100-lb. roller after installation.

INSTALLATION OF QUIK-STIK PRODUCTS

The same guidelines apply for this product except for the adhesive. Quik-Stik Products do not need additional adhesive. Quik-Stik products are not recommended for use over Radiant Heated Floors.

NOTE: ALL WARRANTIES AND GUARANTEES REGARDING THE SUITABILITY AND PERFORMANCE OF ANY PRODUCTS, IF NOT SUPPLIED BY NAFCO, RESTS WITH THE MATERIAL MANUFACTURER OR THE INSTALLATION CONTRACTOR AND NOT WITH NAFCO.

As always, temperature and humidity will affect adhesive open time. Therefore, it is recommended that a test spread of adhesive be done to determine the appropriate open time.

DOMCO TARKETT 400 – ACRYLIC FLOORING ADHESIVE

- Base: Acrylic emulsion
- Consistency: Soft Paste
- Color: Off-white/Cream
- Coverage: 125 s/f per gallon
- Solvent: Water and petroleum distillates
- Weight per gal.: 10 lbs.
- Storage: Non flammable, protect from freezing
- Packaged: Quart, gallon, 4 gallon
- Trowel size: 1/16" x 1/16" x 1/16" square-notched
- Open time: Approximately 15-20 minutes (depending on temperature, relative humidity, and porosity of subfloor)

DOMCO TARKETT 400 Acrylic Flooring Adhesive is a non-flammable acrylic based emulsion system which produces an excellent bond when properly used. This adhesive may be used over properly prepared plywood, hardwood or concrete surfaces. All subfloors must be smooth, clean, dry and free from grease, dirt and other foreign matter. **Do not use #400 adhesive where moisture is present in concrete subfloors.**

Tile, adhesive and floor must be kept between 70-75° F for 48 hours prior to and after installation. Spread adhesive with a 1/16" x 1/16" x 1/16" square-notched trowel, and only spread the amount of adhesive that can be covered within 20 minutes. **Product must be set while adhesive is wet.** Lift every tenth tile to make sure there is a good transfer of adhesive from the floor to the back of the tile. Roll the floor with a standard 100-lb. three-part roller before the adhesive completely dries. Use a handroller in areas not reached by a 100-lb. roller. However, do not roll too soon because DOMCO TARKETT 400 is a wet-set adhesive and the tile may slip out of position. Sometimes on large installations it may be necessary to roll sections of the room before completion. Installations using DOMCO TARKETT 400 adhesive should be ready for traffic after 24 hours drying time.

CAUTION: DO NOT USE DOMCO TARKETT 400 ADHESIVE OVER EXISTING RESILIENT FLOOR COVERING, AS PROPER DRYING MAY NOT OCCUR.

DO NOT WASH THE FLOORING FOR 48 HOURS FOLLOWING INSTALLATION!

DOMCO TARKETT 800 – PRESSURE SENSITIVE ADHESIVE

Base:	Acrylic latex emulsion
Consistency:	Soft Paste
Color:	Off-white
Coverage:	180 s/f per gallon
Solvent:	Water and petroleum distillates
Storage:	Non flammable, protect from freezing
Packaged:	Gallon, 4 gallon
Trowel size:	1/16" x 1/16" x 1/16" square-notched
Drying time:	One hour + (depending on temperature, relative humidity, and porosity of subfloor)
Open time:	Up to 6 hours

(Refer to the Subfloor and Underlayment Requirements section for proper subfloor requirements and preparation.) **Do not use DOMCO TARKETT 800 adhesive where moisture is present in concrete subfloors. A moisture test should always be performed.**

The room, tile and adhesive should be kept between 70-75° F for 48 hours prior to and after installation. Apply DOMCO TARKETT 800 adhesive with a 1/16" x 1/16" x 1/16" square-notched trowel. **Tile must be installed after the adhesive dries.** Drying time will take about an hour, depending upon ambient conditions. When the adhesive dries, the color will change from a milky color to a translucent color, and will feel "tacky". Dry adhesive will not transfer to your finger.

Adhesive may be spread over a large section of the room. When the adhesive is dry and ready, proceed by laying tiles in the proper position and firmly pressing down, paying particular attention to edges and corners. Since there is no problem with tile shifting after it has been pressed into place, the installer may work on freshly laid tiles. After installation is complete, roll the entire floor using a 100-lb. three-part roller. Use a handroller in areas not reached by a 100-lb. roller. Installations using DOMCO TARKETT 800 adhesive are ready for traffic immediately upon completion.

DO NOT WASH THE FLOORING FOR 48 HOURS FOLLOWING INSTALLATION!

DOMCO TARKETT 850 – ADVANCED ACRYLIC ADHESIVE

Base:	Advanced acrylic emulsion
Consistency:	Soft paste
Color:	Blue
Coverage:	200 s/f per gallon
Solvent:	Water and petroleum distillates
Storage:	Non flammable, protect from freezing
Packaged:	Gallon, 4 gallon
Trowel size:	1/16" x 1/16" x 1/16" square-notched
Open time:	Approximately 60 minutes (depending on temperature, relative humidity, and porosity of subfloor)
Use for:	NAFCO Plank products installed for residential use only
Use over:	Properly prepared existing resilient floors firmly adhered to approved subfloors

The room, tile and adhesive must be kept between 70-75° F for 48 hours prior to and after installation. Apply DOMCO TARKETT 850 adhesive with a 1/16" x 1/16" x 1/16" square-notched trowel in a thin, uniform and even coat. Allow the adhesive to set up or skin over. As the adhesive dries, the color will change from a light blue to a darker shade and become shiny. **It is very important that the adhesive does not become completely dry to the touch before installation.** However, do not place plank into adhesive that is too wet; the bond could be compromised. Place the plank onto the adhesive film. Total uniform coverage of the material and substrate must be achieved. The amount of time from the set up to the time that the plank is placed into the adhesive should not exceed sixty (60) minutes. Flooring can be installed as long as the adhesive shows transfer. The floor covering should be rolled with a 100-lb. three-part roller across the width and length of the installation to flatten the adhesive ridges and to expel any entrapped air. Use a handroller in areas not reached by the 100-lb. roller.

NAFCO QUIK-STIK TILE

NAFCO offers tile with the adhesive applied at the factory. This is especially convenient for do-it-yourself installations. When installed over a smooth, clean, dry subfloor and properly maintained, a NAFCO Quick-Stik floor offers ease of installation and years of service. Refer to the Subfloor and Underlayment section for subfloor requirements.

Quik-Stik tiles are ready for traffic immediately after completion.

CLEAN-UP FOR ALL ADHESIVES:

Wet adhesive may be removed from floor covering surfaces with a damp cloth. However, dry adhesive must be removed with a cloth dampened in mineral spirits. Be sure to rinse the areas with a cloth dampened in water after the adhesive is removed.

NOTE: Dried adhesive may be difficult to remove; therefore, take care to remove adhesive before it dries.

DO NOT WASH THE FLOORING FOR 48 HOURS FOLLOWING INSTALLATION!

DOMCO TARKETT 700 - WALL BASE ADHESIVE

TYPE: Acrylic Latex Emulsion / Wet Set

COLOR: Off-white

INSTALLATION SYSTEMS: Vinyl and Rubber Wall Base.

SUBSTRATES: Structurally sound interior surfaces such as dry plaster, drywall, plywood, paneling, and masonry. Not for use over any non-porous surfaces or on wall surfaces that are in direct contact with the earth on the opposite side.

FEATURES: Zero T.V.O.C., low odor, easy spreading, excellent grab, hard setting, moisture and alkali resistant.

CONTAINER SIZES AND PACKAGING: Weight

1 Gallon pail (3.78 L).....(4 / case)

4 Gallon pail (15.14 L)

TROWEL SPEC: 1/8" (3.2mm) V-notched spreader.

COVERAGE: 250 lin. ft. of 4" (102.4 mm) base per gallon unit
(75 lin. M per 3.785 L).

160 lin. ft. of 6" (128.0 mm) base per gallon unit
(50 lin. M per 3.785 L).

DRYING TIME: 24 hours.

OPEN TIME: Maximum of 10 minutes, depending on temperature, relative humidity, and porosity of substrate.

FREEZE THAW STABLE: Yes, to 0°F (-18°C), one cycle

CAUTIONS: Avoid eye and skin contact.

MSDS: Available

APPLICATION: First spread the adhesive with the recommended spreader on back of base or on wall surface. Spread adhesive evenly. Press base firmly into place within 10 minutes after application of adhesive. Roll with hand roller towards last piece installed. It is important that wall base not be stretched during installation. Pre-formed or job site formed corners should be installed first followed by length or roll base.

CARTRIDGE USE: The cartridge is designed for use as a single-bead application for use with a custom wall base application nozzle. A 3-hole nozzle for 4" base or a 5-hole nozzle for 6" base is recommended. Single-bead applications can be smoothed with a V-notched spreader or multiple thin beads may be placed on the back of the base. In this case, cut the plastic tip diagonally to produce a ribbon of adhesive that is 6.5mm in diameter (about the thickness of a pencil). When used with a custom wall base application nozzle cut about 20mm off of the tip. PUNCTURE TAB AT BOTTOM OF NOZZLE WITH A SCREWDRIVER OR SIMILAR TOOL. Cover nozzle of partially used tubes with foil or plastic to keep adhesive from curing in the tube. Coverage is about 75 lin. Ft. (24 lin. M) for 4" base.

CLEAN-UP AND STORAGE: Use water to remove wet adhesive from floor covering or tools. Dried spots of adhesive should be removed with a fine nylon pad dipped in DOMCO TARKETT Neutral Floor Cleaner and water. NEVER USE SOLVENTS.

SHELF LIFE: One year when stored in original container at temperatures between 65°F (14°C) to 85°F (30°C) in a dry area.

For additional information, consult adhesive label. If used in the workplace, obtain a Material Safety Data Sheet. For types of sub-floors and conditions not covered herein, contact your local representative or NAFCO's Installation Services Department for the specific guidelines.

DOMCO TARKETT 901 – KWIK PATCH UNDERLAYMENT

TYPE: Portland / Hydraulic Based Floor Patch COLOR: Gray powder

INSTALLATION SYSTEMS: Compatible with all DOMCO TARKETT adhesives and floor products.

SUBFLOORS: Patching of concrete (all grades), terrazzo, ceramic, marble, and suspended plywood. For porous substrates only. For specialized applications this material may be utilized with diluted or undiluted Kwik Patch Additive. For additional information consult the Kwik Patch Additive information or the container label.

FEATURES: Fine texture, easily featheredged, smooth consistency, easily sanded when cured, ready for flooring in one hour.

COMPRESSIVE STRENGTH: ASTM C-109 6 Hours->1,400 PSI
28 Days->4,500 PSI

PACKING DATA:	WEIGHT
Multi-wall paper bag	25 lbs. (11.3 kg.)

COMPOSITION: A specially formulated blend of Portland cement, inert fillers and synthetic dry polymer resins. When mixed only with water Kwik Patch becomes a fast-setting patching and filling compound. It does not shrink while setting and will resist cracking after setting. Although sufficiently flexible to withstand normal expansion and contraction of wood subfloors, it acquires a sufficient hardness to provide a highly satisfactory surface for installation of NAFCO Resilient Floors. Can be used for both residential and commercial applications. Kwik Patch does not become brittle, therefore will withstand substantial impact.

COVERAGE: One 25 lb. (11.3 kg.) of Kwik Patch will cover approximately 20 sq. ft (1.86 m²) to an even 1/8" (3.2 mm) thickness.

CAUTIONS: Avoid eye and skin contact, respiratory irritant.

SUBSTRATE PREPARATION: All substrates must be structurally sound, solid, dry, clean, and free from dust, grease, old adhesives, wax, concrete sealers or curing compounds, or any other substance that may interfere with materials proper bonding. Concrete subfloors must be free of hydrostatic pressure and excessive surface alkali must be neutralized. Concrete floors should be uniformly dampened just before applying material. Wood subfloors should be brush coated with properly diluted DOMCO TARKETT Kwik Patch Additive. Allow diluted Additive to become tacky but not dry, then apply underlayment material.

MIXING INSTRUCTIONS: Use one gallon (3.78 L) of clean water to one 25 lb. (11.3 kg.) of Kwik Patch. Smaller batches may be mixed following a ratio of approximately 1 part water with 3 parts of Kwik Patch. Settling may occur during transportation, therefore we recommend stirring the entire contents of the bag prior to preparing small batches. Pour the amount of water required and slowly add Kwik Patch powder while mixing. Mix to a smooth, lump free consistency, but avoid prolonged mixing.

SPECIAL CAUTIONS: Do not mix more material at one time than will be used within 10 minutes after mixing is complete. Kwik Patch should never be applied to a surface that is below freezing and patched areas should be protected from excessive heat or drafty conditions during curing period.

TROWELING: After the Kwik Patch has been thoroughly mixed, the material can be troweled from a feather edge to 1/2" (12.5 mm) in a single layer thickness. Deep holes over 1/2" (12.5 mm) should be filled with standard weight concrete. After completely cured concrete can be finished covered with Kwik Patch. Using a flat edged trowel tilted at an approximate 45° angle material is scratched over the area to be covered. The surface finish should be completed by troweling immediately, re-troweling later will leave a rough, pulled surface. To aid in getting a smooth finish and to prevent sticking, the trowel may be dipped in water occasionally.

DRYING: Kwik Patch sets up and dries rapidly as compared to normal Latex Underlayments. Under recommended conditions pot life is limited to about 10 minutes, final set occurs at about 40 minutes, and floor coverings may be installed after about 60-90 minutes. Temperature, humidity, subfloor porosity, and other factors will present some affects on actual dry times. Newly patched areas should be protected from excessive heat and drafts while curing. Protect patched areas from traffic, dirt, or other debris until final installation of floor covering.

CARE OF TOOLS: Never allow Kwik Patch to dry on tools, because it is very difficult to remove. Immediately after use, tools should be immersed in cold water. They can then be wiped clean with a damp cloth. Skin in contact with Kwik Patch should be washed promptly with soapy water before material hardens.

STORAGE: As with any quality adhesive and floor covering product bags should be stored inside in a dry, heated area. Protect from direct contact with the ground, concrete subfloors, and extended exposure to high humidity.



DOMCO TARKETT 921 – KWIK PATCH UNDERLAYMENT ADDITIVE

TYPE: Acrylic Latex Additive

COLOR: White liquid

INSTALLATION SYSTEMS: Compatible with all DOMCO TARKETT adhesives and floor products.

SUBFLOORS: To be used with Kwik Patch Underlayment Powder. Patching and skim coating of concrete (all grades), terrazzo, ceramic, marble, and suspended plywood. For porous and non-porous substrates. In addition can be utilized as a residual cutback adhesive encapsulator, an unglazed ceramic tile leveler, and as a resilient flooring embossing leveler (residential products only).

FEATURES: Fine texture, easily featheredged, smooth consistency, easily sanded when cured, ready for flooring in two hours.

SUBFLOORS: Concrete (all grades), terrazzo, ceramic, marble, and suspended plywood.

PACKING DATA:

WEIGHT

Gallon (3.78 L) container (4 / case) 35.5 lbs. (15.8 kg.)

COMPOSITION: A concentrated acrylic latex additive that diluted or un-diluted is mixed with Kwik Patch. This mixture does not shrink while setting and provides Kwik Patch with excellent skim coat ability over hard to bond substrates. Substantially lengthens working life of Kwik Patch.

COVERAGE: One 25 lb. (11.3 kg.) of Kwik Patch with diluted or un-diluted Additive will cover approximately 50 sq. ft. (4.6 M²) to an even 1/16" (1.6 mm) thickness.

CAUTIONS: Avoid eye and skin contact, underlayment powder is a respiratory irritant.

SUBSTRATE PREPARATION: All substrates must be structurally sound, solid, dry, clean, and free from dust, grease, old adhesives, wax, concrete sealers or curing compounds, or any other substance that may interfere with material bonding. Concrete subfloors must be free of hydrostatic pressure and excessive surface alkali must be neutralized. Diluted primer may be used as a latex adhesive pre-coat over excessively porous concrete and wood substrates, consult specific floor covering material's and adhesives' installation recommendations. Concrete floors should be uniformly dampened just before applying floor patching material. Wood floors should be brushcoated with diluted Additive and allowed to become tacky, not dry, then apply underlayment material.

When used as a **cutback encapsulator** adhesive residue must be a thin, smooth film. Trowel ridges, blobs and puddles of adhesive must be removed by razor scraping. Adhesive surface does not need to be primed before application of underlayment.

When used as an **embossing leveler** both urethane and vinyl wearlayer products must be thoroughly roughened before application. Aggressively wet scrubbing existing floor with a quality Heavy Duty Floor Finish/Wax Stripper and a black nylon pad, followed by a thorough rinsing, is recommended.

DILUTION RATIOS: Uses	Recommended Ratios	Thickness
DILUTED ADDITIVE (1 part Additive with 3 parts water)		
* Porous Subfloor Floating	64 oz./10 lbs.	Featheredge
* Porous Subfloor Priming	160 oz./25 lb. bag (4 L/11.3 kg. bag)	to 1/4" (6.3 mm)
UNDILUTED ADDITIVE		
* Unglazed Ceramic Tile	64 oz./10 lbs.	Featheredge
* Residual Cutback Adhesive	160 oz./25 lb. bag	to 1/16"
* Embossing Leveler	(4 L/11.3 kg. bag)	(1.6 mm)

It is recommended that accurate measuring cups or scales be utilized when preparing products for mixing.

SPECIAL CAUTIONS: Do not mix more material at one time than will be used within 50 minutes after mixing is complete. Undiluted mixture used for leveling is considered an non-porous subfloor. Floor coverings installed over this layer must either have an absorptive felt backing or be installed with totally reactive or dry set adhesive systems. Contact your local NAFCO Representative or Installation Services Department regarding unusual substrate conditions or adhesive recommendations.

TROWELING: After the Kwik Patch and Additive has been thoroughly mixed, the material can be troweled from a feather edge to 1/4" (6.2 mm) when diluted Additive is used, or from a feather edge to 1/16" (1.6 mm) when undiluted additive is used. Imperfections up to 1/2" (12.5 mm) should be filled with Kwik Patch, mixed with water. Using a flat edge trowel tilted at an approximate 45° angle material is scratched over the area to be covered. The surface finish should be completed by troweling immediately, re-troweling later will leave a rough, pulled surface. To aid in getting a smooth finish and to prevent sticking, the trowel may be dipped in diluted Additive occasionally.

Used as a Primer

Diluted Additive, when used alone as a primer for excessively porous concrete and wood substrates, should be applied with a 1/2" (12.5 mm) nap paint roller. Full coverage of the floor surface to be primed should be assured. Previously primed surface may be re-coated as deemed necessary after drying. Primed surface is usually ready for re-coating or adhesive application in about 45 minutes.

Used as an Embossing Leveler

Undiluted Additive, used with Kwik Patch as a embossing leveler, should have mixture scratched onto existing resilient surface filling embossed areas and removing excessive material from the unembossed areas. All embossed areas must be filled or these will telegraph through new floor covering. With heavily embossed floors a re-coat after drying may be necessary. Drying time when re-coating will be substantially lessened.

Used as a Cutback Encapsulator

When used as a cutback encapsulator the subfloor must be properly prepared before application. Subfloor must be scraped free of all excessive adhesive, heavy trowel marks, puddles, etc. Only a thin, smooth film should remain. Material is then troweled on the floor in a skim coat taking care to cover all exposed asphalt residue. Do not try to re-trowel newly spread areas. If touch-up is necessary wait until material has cured. Floor is ready for application of new adhesive in approximately 2 hours.

DRYING: Diluted or un-diluted mixtures of Kwik Patch and Additive may be walked on approximately 1 hour after material spreading, and floor covering installation may proceed after minimum 2 hour cure is completed. Temperature humidity, subfloor porosity and other factors will present some affects on actual dry times. Newly patched areas should be protected from excessive heat and drafts while curing. Protect patched areas from traffic, dirt, or other debris until final installation of floor covering.

CARE OF TOOLS: Never allow diluted or undiluted mixtures of Kwik Patch and Additive to dry on tools, because it is very difficult to remove. Immediately after use tools should be immersed in cold water. They can then be wiped clean with a damp cloth. Avoid cleaning trowels and tools in sinks. Skin in contact patching material should be washed promptly with soapy water before material hardens.

STORAGE: As with any quality adhesive and floor covering, containers should be stored in a dry, heated area. If frozen return to room temperature and stir before use.

SUBFLOOR AND UNDERLAYMENT REQUIREMENTS

Subfloor —The part of the floor that is used for structural purposes. The underlayment is installed over the subfloor and the floor covering goes over the underlayment.

Underlayment —The smooth surface that is installed over the subfloor and receives the floor covering. Some types of subfloors that meet structural requirements are also suitable to receive floor coverings, such as concrete.

Wood:

NAFCO tile may be installed over wood subfloors that are solid, well nailed at the joists, and free from springiness. All wax, grease, dirt and dust must be removed to insure proper adhesive bond.

NAFCO tile should not be installed over wooden subfloors that are in contact with the ground. Wood subfloors over a crawl space should have a minimum of 18" of cross-ventilated air space between the ground and the floor joists. In an area of high humidity due to ground moisture, a polyethylene film should be laid over the ground with over-lapped widths and lengths, to serve as a moisture barrier in addition to the cross-ventilated air space.

NAFCO tiles are flexible and will conform to any irregularities in the subfloor. In order to achieve a smooth installation, it is important that the subfloor be free from cracks, dents and protrusions. All nails and fasteners should be set flush with or slightly below the surface of the wood. Use ring groove or screw nails for this job. Any nails driven below the wood surface will leave a hole that must be filled with a non-shrinking filler and sanded smooth. (Do not use gypsum-based patching compounds.) All cracks, dents and other irregularities in the wood subfloor must also be filled with the filler and sanded smooth prior to the installation of NAFCO tile.

For double wood subfloors that are in poor condition, which sanding will not correct, or if top boards are more than 3" wide, install Underlayment Grade plywood (fully sanded, 1/4" minimum thickness) with the face grain perpendicular to the board joints. Install the plywood underlayment with cross joists staggered at least 16". Nails should be placed 6" on center throughout the board and spaced 3" apart along the edges. Underlayment sheets should be only slightly butted and any open joint must be properly filled. (Do not use gypsum-based patching compounds.)

Single wood subfloors should be covered with 1/4" minimum thickness Underlayment Grade plywood if the boards are 4" or less in width. If the boards are more than 4" wide, install 1/2" Underlayment Grade plywood. The plywood face grain shall be perpendicular to the joists. Follow the same nailing procedure as outlined above.

Open wood joists may be covered with 5/8" Underlayment Grade plywood where joist space is 16" or less. For joist spacing up to 24" use 3/4" plywood. Blocking or bridging is required under the plywood along the edges perpendicular to the joists. Face grain of the plywood shall be perpendicular to the joists. Nails shall penetrate at least 1-1/4" into the joists. Nail spacing should be as outlined above.

APA rated Sturd-I-Floor is a specially designed combination subfloor/underlayment panel. For use as an underlayment for NAFCO tile, we recommend that the Sturd-I-Floor have veneered faces which have been fully sanded. These panels must be installed according to American Plywood Association (APA) recommendations. See American Plywood Association Design/Construction Guide for further information regarding plywood underlayment.

DOMCO TARKETT adhesives (#400, #800 or Quik-Stik tiles) may be used over suitable wood subfloors or underlayment.

Concrete:

NAFCO vinyl tile and adhesives should not be installed on any concrete floor where there is any danger of hydrostatic pressure or water seepage, and no implication is made in these specifications that the installation of NAFCO tile with any of the specified adhesives will in any way seal the slab or prevent moisture penetration through the slab.

Moisture is a major cause of failure in many tile installations. This is especially true with non-porous flooring such as NAFCO vinyl tile since all breathing of the subfloor is virtually eliminated. It is highly recommended that proper moisture tests be carried out on any slab. Although there are several methods that can be used, we prefer the calcium chloride method.

When methods are used (other than the Calcium Chloride method), their instructions must be followed and the test results must also not exceed the maximum allowed by NAFCO. NAFCO's maximum allowance for test results should not exceed 3 lbs/1,000 sq. ft./24hours.

Concrete floors on-grade and below-grade must have a suitable moisture barrier installed between the concrete and the ground. All cracks in the concrete should be filled with a latex Portland cement-based patching compound. (Do not use gypsum-based patching compounds.) The surface must be smooth, clean, dry and free from dust. Old adhesive from a previous tile installation should be removed by scraping or wet grinding before the new tile is installed. Concrete floors on which curing compounds and tilt-up parting compounds have been used can cause adhesive-to-floor bonding failure. If used, these compounds must be removed by wet grinding.

If old black asphalt or cutback adhesive is present, it must be scraped to remove as much of the adhesive as possible. The concrete should then be covered with a Portland-type patching compound to encapsulate the old adhesive.

DOMCO TARKETT adhesives (#400, #800 or Quik-Stik tiles) may be used on properly prepared concrete subfloors that meet the requirements outlined in this section.

Radiant Heated Concrete:

Do not use Quik-Stik tiles, #800 adhesive or #850 adhesive over radiant heated concrete.

IMPORTANT: DOMCO TARKETT #400 adhesive is the only recommended adhesive for this application (see chart on page 5).

NOTE: ALL WARRANTIES AND GUARANTEES REGARDING THE SUITABILITY AND PERFORMANCE OF ANY PRODUCTS, IF NOT SUPPLIED BY NAFCO, RESTS WITH THE MATERIAL MANUFACTURER OR THE INSTALLATION CONTRACTOR AND NOT WITH NAFCO.

OTHER TYPES OF SUBFLOORS

Terrazzo or Ceramic Subfloors:

Old terrazzo or ceramic flooring subfloors shall be treated in the same manner as a concrete subfloor, with additional precautions. Surface coating or sealer must be completely removed by light sanding or other suitable effective methods and shall be filled or leveled to a smooth surface with DOMCO TARKETT's Kwik Patch latex patching compound and rendered suitable for the installation of NAFCO flooring. Spread adhesive with the recommended notched trowel, being sure to avoid excessive application of adhesive and allowing sufficient time for evaporation of adhesive vehicle since these surfaces are relatively non-absorbent. Bond tests should always be performed if porosity or suitability of substrate is suspect.

- If they are to be used as a subfloor they must be checked, with moisture and bond tests conducted.
- Remove all sealer, varnish, wax, oils and soil to prevent their interfering with the adhesive bond.
- Any glazed or very smooth surfaces must be abraded or roughened up.
- Make surfaces level and smooth using DOMCO TARKETT's Kwik Patch with the properly diluted Kwik Patch Additive. DOMCO TARKETT does not warrant or recommend the use of products containing "gypsum".

Note: Existing resilient floor coverings, whether covered with embossing leveler or not, are considered non-porous substrates. Vehicle dispersement adhesive types should not be utilized over these substrates, unless the new flooring product itself has a porous backing.

- The use of a quality (portland) hydraulic cement based fast-setting embossing leveler, such as DOMCO TARKETT's Kwik Patch System or its equivalent. DOMCO TARKETT Kwik Patch when properly mixed with DOMCO TARKETT Kwik Patch Additive is designed to eliminate the need to remove most existing resilient sheet floors as well as well-bonded resilient tiles by filling and leveling the surface of existing embossed floors, prior to the installation of NAFCO floors (see page 9).

It is important that the flooring surface be cleaned and free from floor finishes and foreign matter prior to the application of the embossing leveler. Spread the embossing leveler in accordance with manufacturers' recommendations.

Caution: Embossing levelers are designed for use in residential applications only. They are not suitable for use in commercial environments or with commercial products.

NOTE: WARRANTIES, PERFORMANCE, AND APPLICATION GUARANTEES FOR THE EMOSSING LEVELERS RESTS WITH THE MANUFACTURER OF THESE PRODUCTS AND NOT WITH NAFCO.

Existing Resilient Floors:

NAFCO residential tiles and planks may be installed over existing floors that are fully and firmly adhered to the subfloor.

NOTE: Cushion, foam-back or perimeter types are not recommended. New underlayment should also not be installed over heavily-cushioned floors.

All traces of wax, other surface coatings, or foreign matter must be removed in a way that does not damage the integrity of the existing flooring or hinder a proper bond of the new flooring.

On flat or lightly embossed floors, adhesive may be applied directly to the existing floor. However, heavily embossed floors should either be (1) corrected with an embossing leveler (Portland type), with the latex additive, (2) covered with an underlayment, or (3) completely removed. NOTE: Existing resilient floor coverings, whether covered with an embossing leveler or not, are considered a non-porous substrate, and should still be considered an existing floor for installation purposes. Damaged areas must be replaced or repaired to render them smooth.

It is the installer's responsibility to properly evaluate the existing flooring and determine whether it is (a) suitable for installation, (b) should be covered with underlayment or embossing leveler, or (c) should be removed. It should be noted that installation over existing floors may leave the new floor more susceptible to indentations (this is especially true if there is more than one existing floor). As a rule of thumb, installation of NAFCO tiles or planks is not recommended over more than one (1) existing floor.

The removal of existing floor coverings and their adhesives should be done in accordance with Federal, State, provincial, and local regulations following the Recommended Work Practices for the Removal of Resilient Floor Coverings published by the Resilient Floor Covering Institute (see page 2 of this manual for further details).

NOTE:

DOMCO TARKETT 400 ADHESIVE SHOULD NOT BE USED OVER EXISTING RESILIENT FLOOR COVERING, BECAUSE PROPER DRYING MAY NOT OCCUR.

DOMCO TARKETT 850 ADHESIVE IS THE ONLY RECOMMENDED ADHESIVE FOR THE 3" X 36", 4" X 36", AND 6" X 36" PLANK PRODUCTS OVER EXISTING FLOORING.

DOMCO TARKETT 800 ADHESIVE SHOULD BE USED WITH ALL OTHER SIZE NAFCO TILE PRODUCTS (9" X 9", 12" X 12", 16" X 16") OVER EXISTING FLOORING.

INSTALLATION

FOR 9" X 9", 12" X 12", 16" X 16" OR COMBINATION OF TILES

Layout of the Room

For Squarely Laid Fields

To square the area to be covered, first find the center of one end of the main rectangle. Locate the same point at the other end wall.

Snap a chalk line between these points to mark the center line on the floor. Then measure along this center line to find the middle of the room.

At the center point, mark off a line across the room at exactly right angles to the first line. This may be accomplished by the 3-4-5 triangle method as shown in Figure 1. Measure 4 feet toward each side wall from the center point. Then measure 3 feet from the center point along the longer line. Measure exactly 5 feet from the 3 foot mark on the center line to the 4 foot mark on the crossline. If the 5 foot measurements do not come out to exactly 5 feet, the center crossing lines are not at a true right angle.

For large rooms, multiples of the above dimensions may be used to obtain greater accuracy. (6-8-10 or 9-12-15, etc.)

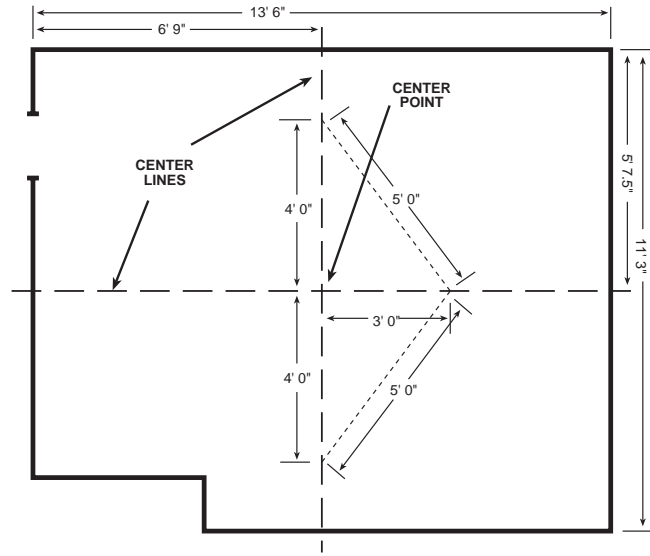


Figure 1. Finding the center point.

Dry-lay a row of tiles from the center line to the side wall to determine the space left for the border. If the resulting border is too small, move the starting point over a half tile width so that it straddles the center line. Repeat the same procedure lengthwise of the room. (This can readily be figured out from the room dimensions without putting down the tiles if desired.)

If it is decided to have the center row of tiles straddle either or both of the center lines, additional guide lines should be snapped on the floor 1/2 tiles width on one side of either or both center lines as required. (See Figure 2.)

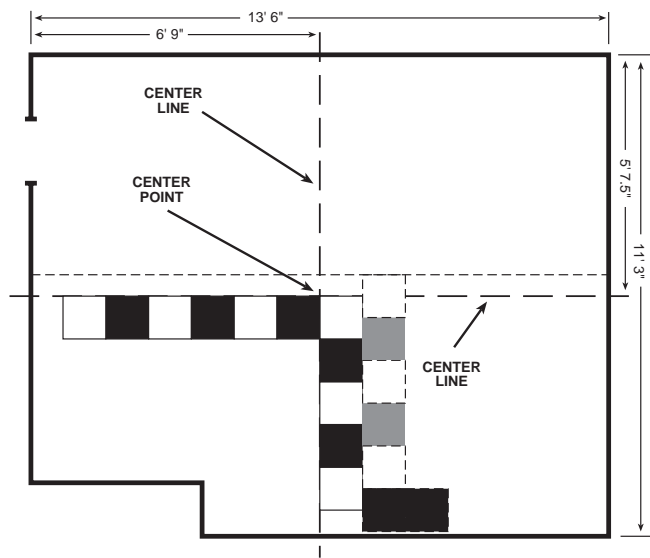


Figure 2. Adjusting center lines.

After the border widths have been determined and the center starting lines have been snapped, spread the recommended adhesive on the center lines leaving portions of the lines at center and near each wall uncovered as shown in Figure 3. Allow the adhesive to dry hard enough that it will not absorb the chalk when the line is resnapped. Then resnap the lines on top of the adhesive using the uncentered portions of the lines in circles at center and at each wall as your guides.

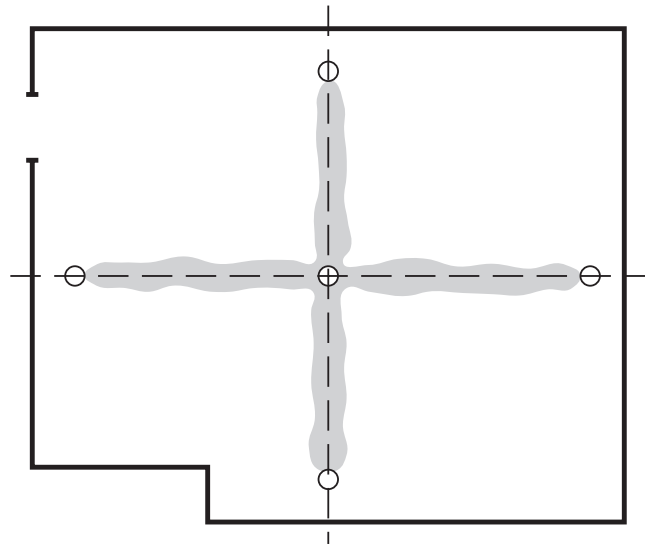


Figure 3. Spread adhesive on center lines.

Spread the adhesive over one half the area and after it is tacky, start laying tile from the right angle formed in the center of the room by center lines. Lay toward the two corners of the room as shown in Figure 4. Always refer to your guide lines as you progress with laying so that any mistake can be corrected before it is too late. It may be necessary at times to compromise on the rightness of joints to make allowances for unevenness or waves of the subfloor. Take care to place tiles as accurately as possible without sliding them into place. The direction of tile marbleization should be reversed in adjoining tile. Generally speaking, it is never necessary to heat any field tile.

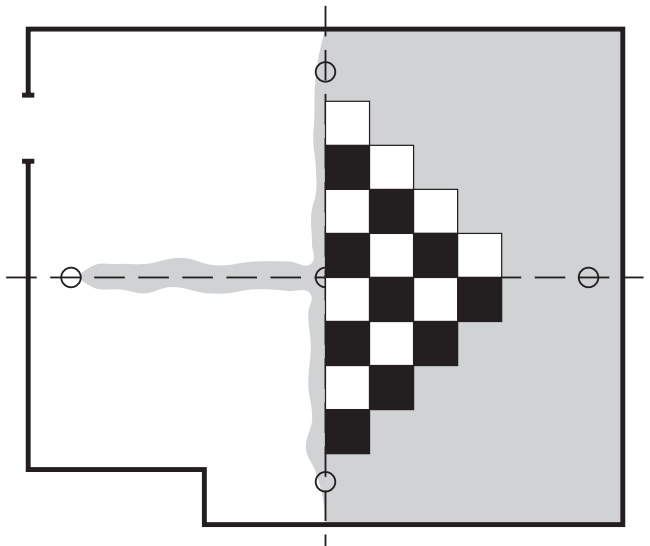


Figure 4. Spread adhesive over one-half floor area.

Always work ahead of yourself from the finished floor, using care to prevent skidding of the tile on which you are kneeling. When a checkerboard design is being laid, laying tile in diagonal rows in a stair-step fashion allows the same color to be laid at one time rather than alternating colors as would be necessary when laying square.

After laying field tile in half the room, spread adhesive over the other half of the floor, then complete installation as described above. Border tiles should be installed only after the field tiles have been completely laid.

For Diagonally Laid Fields

First square the area to be covered and mark center lines as outlined for Squarely Laid Fields. Then it is necessary to snap diagonal lines on the floor through the center point which are at an angle of 45 degrees to the center lines. This may be done as shown in Figure 5.

From the intersection of the two center lines, measure equidistant in all four directions along the center lines. Connect these four points to form a perfect square. In turn, bisect each side of the square and connect these points with the intersection of the center lines. The resulting lines should be snapped on the floor as guide lines for laying the tile when a diagonal pattern is desired.

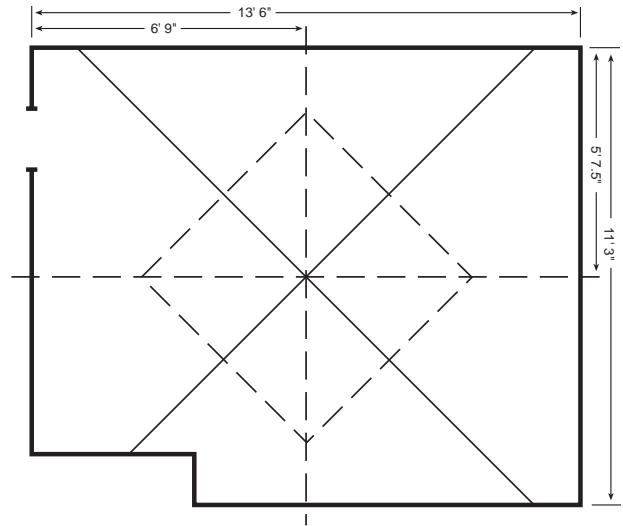


Figure 5. Snap diagonal lines through center point.

To determine border width, lay loose tiles from the center point to the wall as shown in Figure 6. If two or more colors are used, the borderline should be established so that the field will end with half tile of the same color on all sides of the room. The half tile touching the border should be of a color contrasting to that of the border for the best appearance.

To increase or decrease the width of the border or to change the color of the half tile, start at the center line with the opposite color. If this does not produce a satisfactory border size, move the guide lines over half the width of a tile from the established line.

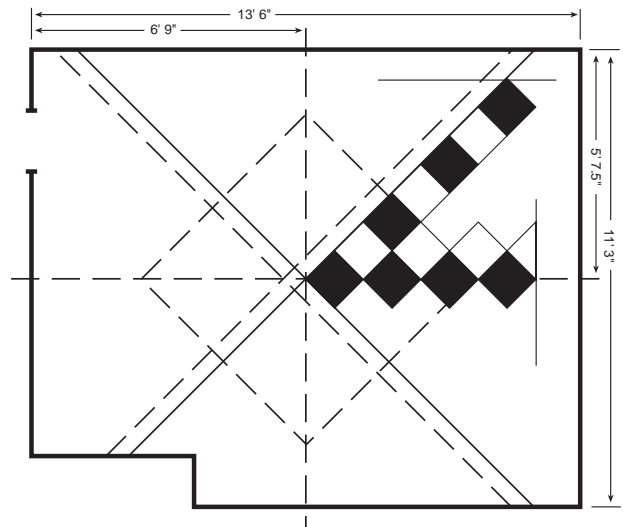


Figure 6. Determining border width.

When diagonal guide lines are properly placed and snapped, spread adhesive over guide lines, resnap lines, and proceed with installation as outlined for Squarely Laid Field, one half of the room at a time (Figure 7). Half tiles may be cut on the job with a tile cutter or with a knife after heating the tile.

IMPORTANT: All floorings must be rolled with a minimum 100-lb. roller after installation. Use a handroller in areas not reached with a 100-lb. roller.

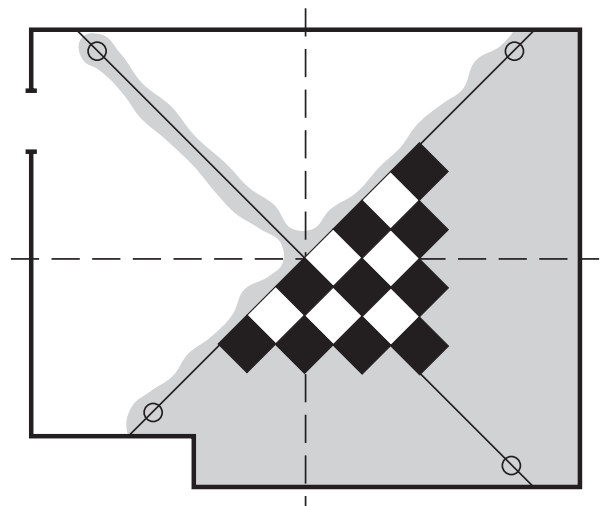


Figure 7. Install half of room at a time.

SPECIAL DESIGN OPTIONS

Installation Options With our GroutFit™ (2-sided Grout Lines)

This product offers six installation options:

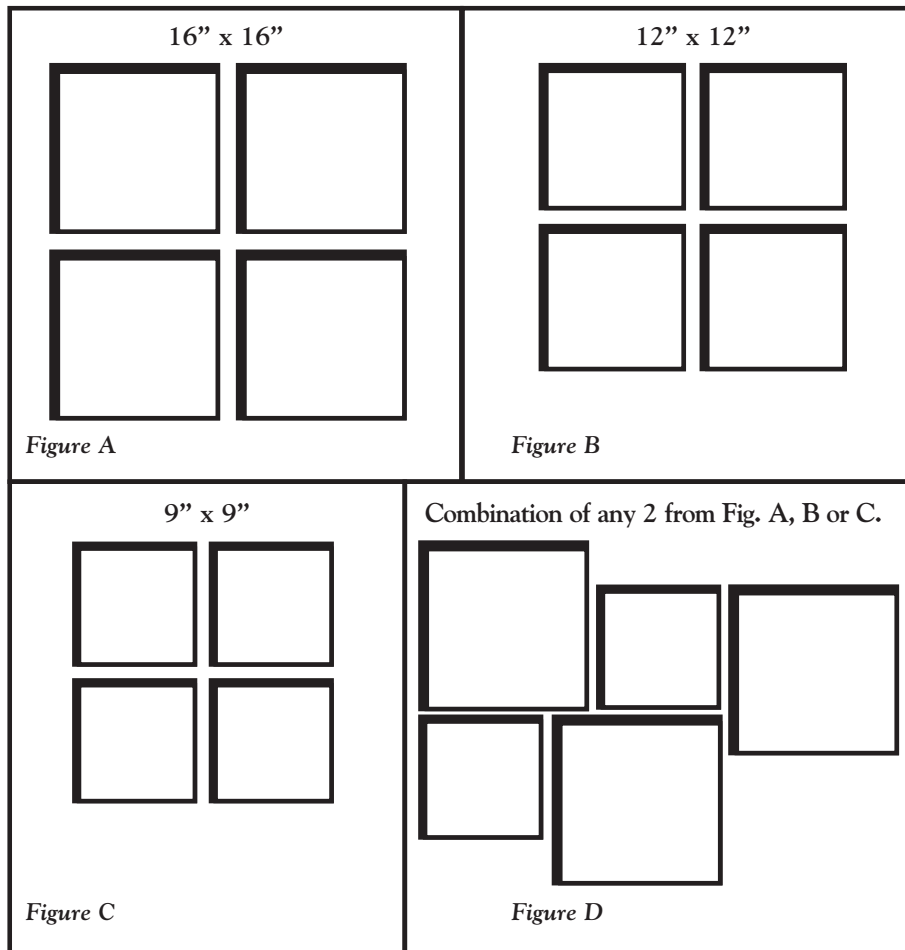
- (1) 16" x 16";
- (2) 12" x 12";
- (3) 9" x 9";
- (4) combination of 12" x 12" and 16" x 16";
- (5) combination of 9" x 9" and 16" x 16";
- (6) combination of 9" x 9" and 12" x 12".

SEE FIGURES A-D FOR THESE OPTIONS AND RECOMMENDED PLACEMENT OF TILES.

NOTE: The NAFCO GroutFit™ products are designed with multi-shading to replicate natural products. Each carton is a blend of several shades; the installed floor should be a random mix of all shades.

IMPORTANT: When installing products with our GroutFit™ (2-sided grout lines), make sure the grout lines are always placed in the same direction.

IMPORTANT: All floorings must be rolled with a minimum 100-lb roller after installation.
Use a handroller in areas not reached with a 100-lb roller.



Permastone and Elements Square Footage Formulas

Formula for installing PermaStone 12" x 12" and 16" x 16" tiles together:

One (1) 12" x 12" and one (1) 16" x 16" is a module equaling 2.78 square feet.

Take the square footage of the room and divide it by 2.78 to get the total number of modules needed. Divide the total number of modules by the number of pieces in a carton of 12" x 12" and 16" x 16".

Example:

Room size = 12' x 12' room; $12 \times 12 = 144$ square feet

144 square feet divided by 2.78 = 51.80 total modules

52 pieces (of 12" x 12") divided by the number of pieces in a carton (27 pieces of 12" x 12") equals 2 cartons of 12" x 12".

52 pieces (16" x 16") divided by the number of pieces in a carton (15 pieces of 16" x 16") equals 3.46 cartons.

For this room (12' x 12') you would need two (2) cartons of the 12" x 12" tiles and four (4) cartons of 16" x 16" tiles.

Formula for installing PermaStone 16" x 16" and 9" x 9" tiles together:

One (1) 16" x 16" and one (1) 9" x 9" is a module equaling 2.34 square feet.

Take the square footage of the room and divide it by 2.34 to get the total number of modules needed. Divide the total number of modules by the number of pieces in a carton of 16" x 16" and 9" x 9".

Example:

Room size = 12' x 12' room; $12 \times 12 = 144$ square feet

144 square feet divided by 2.34 = 61.54 total modules

61.54 pieces (of 16" x 16") divided by the number of pieces in a carton (15 pieces of 16" x 16") equals 4.10 cartons of 16" x 16".

61.54 pieces (9" x 9") divided by the number of pieces in a carton (48 pieces of 9" x 9") equals 1.30 cartons.

For this room (12' x 12') you would need five (5) cartons of the 16" x 16" tiles and two (2) cartons of 9" x 9" tiles.

Formula for installing Elements 12" x 12" and 9" x 9" tiles together:

One (1) 12" x 12" and one (1) 9" x 9" is a module equaling 1.56 square feet.

Take the square footage of the room and divide it by 1.56 to get the total number of modules needed. Divide the total number of modules by the number of pieces in a carton of 12" x 12" and 9" x 9".

Example:

Room size = 12' x 14' room; $12 \times 14 = 168$ square feet.

168 square feet divided by 1.56 = 107.69 total modules.

108 pieces (of 12" x 12") divided by the number of pieces in a carton (27 pieces of 12" x 12") equals 4 cartons of 12" x 12".

108 pieces (of 9" x 9") divided by the number of pieces in a carton (48 pieces of 9" x 9") equals 2.25 cartons.

For this room (12' x 14'), you would need four (4) cartons of the 12" x 12" tiles and three (3) cartons of the 9" x 9" tiles.

NOTE: You should calculate approximately seven (7) percent overage for waste on all of these formulas.

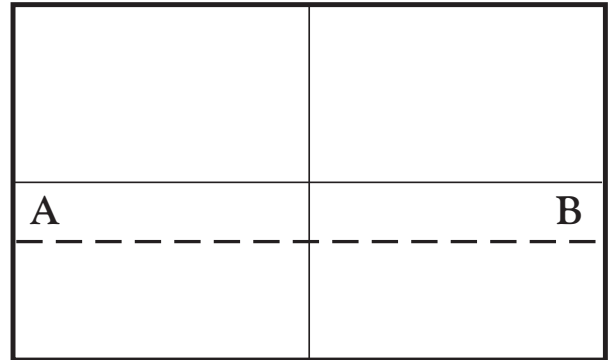
INSTALLATION
FOR 3" X 36", 4" X 36", 6" X 36" PLANK

Layout of the Room

Find the centerpoint of the room. Strike a line (A-B). Obtain a true 90° angle by using a carpenter's square. Strike a second line, which will divide the room into four equal parts.



Measure the distance from the center to the wall parallel to the direction of the plank. Divide that measurement by the width of the plank (3"). If less than half a plank (1-1/2") remains as the border plank, adjust the point by 1-1/2". This will give a larger border along the wall and reduce the chance of having to cut a small sliver of flooring to place along the wall.

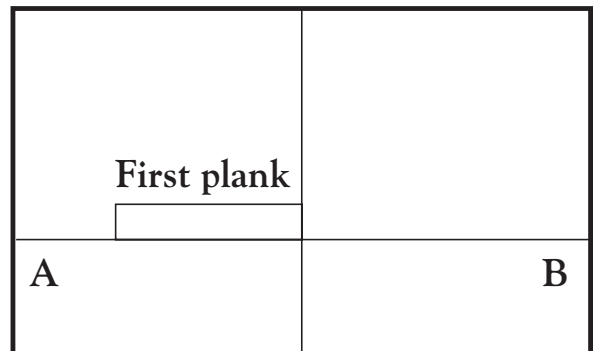


NAFCO Vinyl Planks feature gently rolled edges to accent individual planks and create a distinct plank effect. For this reason, anytime you make a cut, you will want to place that cut edge along a wall. Placing a cut edge against the uncut edge of another piece of flooring will not look natural or realistic. However, for special patterns, the floor may be installed cut edge by cut edge and rolled edge to rolled edge for a more consistent and finished look. Cut edges must be crimped with a handroller.

After the working lines have been established, they may be adjusted in multiples of 3" in either direction to accommodate your particular installation.

Layout of the Plank

Spread DOMCO TARKETT 400 adhesive following the specific instructions on the adhesive container and in this manual.



CAUTION: DOMCO TARKETT 400 adhesive is a wet-set type and has an open time of 15-20 minutes. The planks must be layed in the adhesive during this open time for optimum results.

Carefully place the first piece of plank at the junction of the chalk lines. Continue to lay the plank, making sure each plank is flush against the chalk line and tight against the adjoining plank. Make sure the plank is well seated into the wet adhesive, paying special attention to the edges. Lay row by row, or in a pyramid fashion.

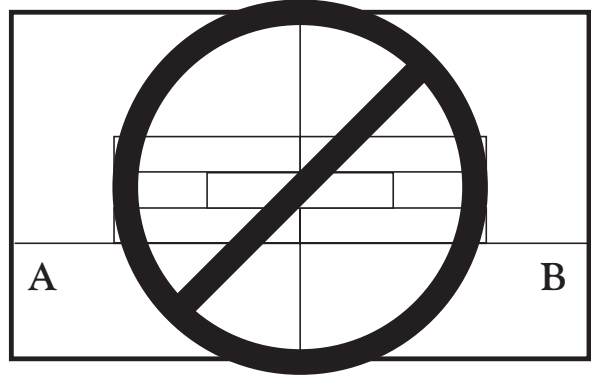
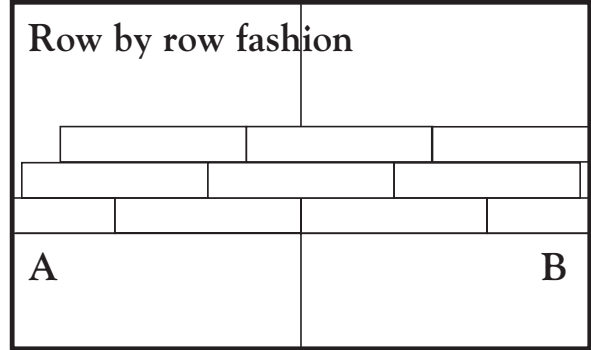
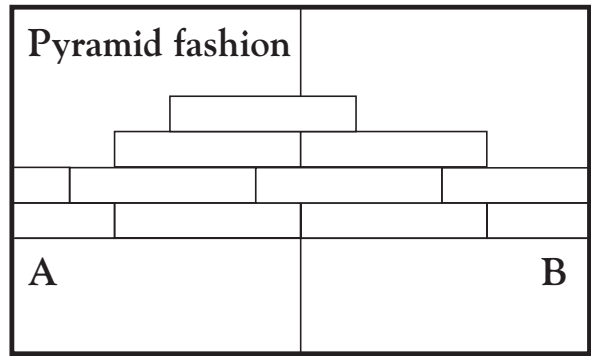
Fitting the Border

Measure the distance from the last plank in the row to the wall. Mark the plank and cut it against the mark. Lay the plank in place, making sure that the cut edge is against the edge.

Fitting Around Irregular Objects

Make a pattern out of heavy paper to fit around pipes and other irregularities. Place the pattern on the plank, trace, cutting along the trace lines with scissors or a sharp knife. Place the cut plank into position.

IMPORTANT: All floorings must be rolled with a minimum 100-lb roller after installation. Use a handroller in areas not reached with a 100-lb roller.



INSTALLATION FOR WALL BASE

This section details installation of vinyl and rubber wall base. As with flooring materials, wall base, adhesive, and the area to be installed should be acclimated to normal room temperature of 70°F (21°C) at least 48 hours prior to, during and after installation. A minimum of 55°F (°C) should be maintained afterward.

Substrate Preparation:

Suitable substrates for base will be clean, dry, porous, structurally sound, and not in direct contact with the ground. Base should not be installed on existing adhesive residues. Since base is installed with a water vehicle dispersed adhesive substrates must be porous. Laminated or surfaces covered with wallpapers or vinyl coatings are not acceptable and will affect material bond. Walls should be smooth and continuous to within 1/2" (13 mm) of the floor. Fill in any gaps or holes with a quality wall patching material. Base will only bridge over very minor imperfections. If any doubt exists as to possible telegraphing wall should be smoothed or patched. Prime excessively porous substrates with diluted Kwik Patch Additive.

We recommend to install either the pre-molded outside corners or jobsite manufactured outside corners first followed by the length base. For the pre-molded corner the recommended adhesive is applied to the back of the corner piece and the wall with the 1/8" (3 mm) V-notched spreader, then the piece is pressed firmly over the outside corner. We recommend the adjacent length base pieces then be installed, prior to adhesive set-up of the corner piece, to allow possible adjustment of the corner piece.

To make an outside corner, measure and then bend the wall base face-in at the point where the corner is to be made. With a utility knife held at an angle, shave a strip approximately halfway through and 1/4" (6 mm) wide from the ribbed back of the base at the point the corner is to be made. A small amount of heat, supplied by an electric heat gun, will make forming the corner easier. Allow the piece to cool before applying adhesive. Apply adhesive to the back of the base and also to the wall, position the corner and press firmly into place.

To make an inside corner, measure and then cut an inverted V-shaped notch in the toe of the wall base at the point where the bend is to be made. Bend the base at a right angle to shape the corner. A small amount of heat, supplied by an electric heat gun, will make forming the corner easier. Allow the piece to cool before applying adhesive. Apply adhesive to the back of the base and press firmly into position.

Installation of Wall Base:

The length base, either in stick or roll form, is then installed between all the corner pieces. Adhesive is applied to the back of the base with the 1/8" (3 mm) V-notched spreader. If the wall surface is rough or irregular also apply adhesive to the wall. When applying adhesive either to the wall or the back of the base do not apply adhesive any closer than 1/2" (25 mm) to the top of the base. Although some tacking of the adhesive may aid in quick adhesion, base should be installed and rolled within 10 minutes of spreading the adhesive. The entire length of the piece to be installed must be pressed firmly to the wall to ensure a full transfer of adhesive. Base then is hand rolled firmly in one direction, toward the last piece installed (opposite the direction in which the base is being installed). This helps to prevent stretching of the base. Remove any adhesive smears and smudges as they occur.

During installation of cove-type wall base, press firmly down, flexing the toe tightly against the floor. This is especially important when using roll base. This smoothes out any irregularities in the toe area and prevents dirt from being swept underneath the base. In addition while the base will not be watertight, properly done, it will help against maintenance water intrusion that may get under the floor covering material. Where additional protection against floor surface moisture may be beneficial a bead of non-staining silicon caulk can be gunned behind the cove toe of the base prior to installation of the base. After installation of several pieces or a long length the toe may be butted toward the wall with a slight pressure using a straight piece of wood to achieve a straight line where the toe meets the floor.

NAFCO Quick-Stick Wall Base:

This product is installed in the same manner as adhesive applied base. When manufacturing corners, ensure that shavings do not get embedded into the factory applied adhesive. Be cautious when positioning because self-adhering base is not easily removed and re-applied.

MAINTENANCE

FOR NAFCO RESIDENTIAL LUXURY VINYL TILE

Although NAFCO floors are durable, all floor coverings require some care to look their best. Many problems can be prevented before they occur. Special attention should be paid when selecting a floor for your specific needs.

The type and frequency of traffic on your NAFCO floor will determine the frequency of maintenance needed. The type of floor and even the color will also have some bearing on how much care may be necessary. For example, solid color floors will visually show scuff, scratches, dirt and general wear to a greater degree than multi-colors of chips or patterns. Of course, white or light colors will visually show staining to a greater degree than darker colors. For this reason, solid color and white floors should receive special attention in regard to preventive maintenance and the amount of care provided. Good judgement when choosing the type and style of your new floor will help prevent maintenance problems before the floor is even installed.

If DOMCO TARKETT 400 or DOMCO TARKETT 850 adhesives were used when installing your floor, all traffic and furniture should stay off the floor for at least 24 hours to allow the adhesive to dry completely.

Quik-Stik tiles or DOMCO TARKETT 800 adhesive installations may be walked upon immediately after completion.

NOTE: DO NOT WASH ANY INSTALLATION FOR 48 HOURS!

Here are the proper steps for maintaining your NAFCO floor:

1. In order to prevent indentations and scratches, use glass, polished metal or other non-staining cups or casters with flat under surfaces (see diagrams on page 25).
2. Protect your floor against burns. NAFCO floors can be damaged by burns from the glowing end of a cigarette, matches, or other extremely hot items.
3. Protect your floor from tracked-in dirt and grit particles by using mats at all outside entrances. Take the time to remove any imbedded grit particles from shoe soles before entering the room. Avoid the use of rubber or latex-backed mats, as certain rubber compounds can permanently stain vinyl (consult the mat manufacturer to determine if their backing will stain vinyl). Avoid tracking in tar or asphalt from driveways, as this can also discolor vinyl.
4. Avoid stilleto or damaged high heels on your floor. They can cause permanent damage.
5. All NAFCO floors have good resistance to stains. They are not affected by most common household spills; however, any spill should be cleaned up immediately. The longer the spilled material is left on the floor, the greater the risk of permanently staining the floor. For information regarding the proper method or solution to use on a specific stain, see the chart on page 28.
6. Avoid exposure to direct sunlight for prolonged periods, as this can result in tile discoloration. Excessive temperatures might cause tile expansion. During peak sunlight hours, the use of drapes or blinds is recommended especially on patio doors, etc., that receive direct sunlight.

Preventive Maintenance for all NAFCO Residential Floors

Light daily sweeping or vacuuming will prevent dirt and grit particles from being ground into the surface of the floor. If the floor is swept daily, a light weekly washing should be sufficient. Initially, damp mopping with clear water may be all that is necessary under light traffic conditions. After the first week or so, it will be necessary to use DOMCO TARKETT SureShine® cleaner. Apply the SureShine® cleaner to the floor with a sponge mop. After the soil deposits have been loosened from the floor, mop thoroughly with clean water to remove them and all detergents, then rinse the floor with clean, warm water to remove all soapy residue. Do not flood the floor with water. Any detergent film left on the floor can hold tracked-in dirt and leave the surface with a dull, cloudy appearance.

NAFCO's factory Tritonite™ finish is resistant to scuffing, wear from normal use, and common stains. However, the finish is not indestructible and will scratch when subjected to harsh conditions.

NAFCO residential tiles have a surface factory finish top coat. The finish is applied during the manufacturing process and is either high gloss or matte satin, depending upon the product style. All gloss levels are maintained in the same way (see page 27).

In time, high traffic areas may begin to show a reduction in gloss. When this occurs, thoroughly clean and dry the floor and apply a light coat of DOMCO TARKETT SureShine® Polish. To apply DOMCO TARKETT SureShine® Polish, pour the liquid in a shallow pan; dip in a sponge mop and wring it out gently, leaving it saturated with the liquid polish. Mop in one direction to insure uniform distribution. Do not mop too vigorously as this could cause bubbles.

Continue to apply DOMCO TARKETT SureShine® Polish to the floor until the entire floor is evenly coated. SureShine® Polish dries in 20-30 minutes; if more than one coat is desired, be sure to let each coat completely dry before applying another. **Keep in mind that 2-3 thin coats are better than one heavy coat.**

In time, it may be necessary to strip the old layers of DOMCO TARKETT SureShine® Polish and apply fresh coats. Strip the polish by using a high-quality wax/polish remover.

Important To The End User:

Information concerning installation and maintenance for NAFCO floors is provided in each product carton. This must be passed on to the end user upon completion of each installation.

MAINTENANCE

FOR NAFCO LUXURY VINYL TILE IN LIGHT COMMERCIAL APPLICATIONS

Although NAFCO floors are durable, all floor coverings require some care to look their best. Many problems can be prevented before they occur. Special attention should be paid when selecting a floor for your specific needs.

The type and frequency of traffic on your NAFCO floor will determine the frequency of maintenance needed. The type of floor and even the color will also have some bearing on how much care may be necessary. For example, solid color floors will visually show scuff, scratches, dirt and general wear to a greater degree than multi-colored chips or patterns. Solid color and white floors should receive special attention in regard to preventive maintenance and the amount of care provided. Good judgement when choosing the type and style of your new floor will help prevent maintenance problems before the floor is even installed.

If DOMCO TARKETT 400 or DOMCO TARKETT 850 adhesives were used when installing your floor, all traffic and furniture should stay off the floor for at least 24 hours to allow the adhesive to dry completely.

Quik-Stik tiles or DOMCO TARKETT 800 adhesive installations may be walked upon immediately after completion.

NOTE: DO NOT WASH ANY INSTALLATION FOR 48 HOURS!

Here are the proper steps for maintaining your NAFCO floor in a light commercial application:

1. In order to prevent indentations and scratches, use glass, polished metal or other non-staining cups or casters with flat under surfaces (see diagrams on page 25).
2. Protect your floor against burns. NAFCO floors can be damaged by burns from the glowing end of a cigarette, matches, or other extremely hot items.
3. Protect your floor from tracked-in dirt and grit particles by using mats at all outside entrances. Take the time to remove any imbedded grit particles from shoe soles before entering the room. Avoid the use of rubber or latex-backed mats, as certain rubber compounds can permanently stain vinyl (consult the mat manufacturer to determine if their backing will stain vinyl). Avoid tracking in tar or asphalt from driveways, as this can also discolor vinyl.
4. Avoid stilleto, damaged high heels, or sharp objects dropped on your floor. They can cause permanent damage.
5. All NAFCO floors have a good resistance to stains and are not affected by most common household spills. However, any spill should be cleaned up immediately. The longer the spilled material is left on the floor, the greater the risk of permanently staining the floor. For information regarding the proper method or solution to use on a specific stain, see the chart on page 28.
6. Avoid exposure to direct sunlight for prolonged periods, as this can result in tile discoloration. Excessive temperatures might cause tile expansion. During peak sunlight hours, the use of drapes or blinds is recommended especially on patio doors, etc., that receive direct sunlight.

Preventive Maintenance for all NAFCO Light Commercial Applications

Light daily sweeping or vacuuming will prevent dirt and grit particles from being ground into the surface of the floor. If the floor is swept daily, a light weekly washing should be sufficient. The type and frequency of traffic will determine the frequency of maintenance needed. It will be necessary to use DOMCO TARKETT SureShine® cleaner. Apply the SureShine® cleaner to the floor with a sponge mop. After the soil deposits have been loosened from the floor, mop thoroughly with clean water to remove them and all detergents, then rinse the floor with clean, warm water to remove all soapy residue. Do not flood the floor with water. Any detergent film left on the floor can hold tracked-in dirt and leave the surface with a dull, cloudy appearance.

NAFCO's factory Tritonite™ finish is resistant to scuffing, wear from normal use, and common stains. However, the finish is not indestructible and will scratch when subjected to harsh conditions or sharp objects.

NAFCO tiles have a surface factory finish top coat. The finish is applied during the manufacturing process and is either high gloss or matte satin, depending upon the product style. All gloss levels are maintained in the same way (see page 27).

In time, high traffic areas may begin to show a reduction in gloss. When this occurs, thoroughly clean and dry the floor and apply a light coat of DOMCO TARKETT SureShine® Polish. To apply DOMCO TARKETT SureShine® Polish, pour the liquid in a shallow pan; dip in a sponge mop and wring it out gently, leaving it saturated with the liquid polish. Mop in one direction to insure uniform distribution. Do not mop too vigorously as this could cause bubbles.

Continue to apply DOMCO TARKETT SureShine® Polish to the floor until the entire floor is evenly coated. SureShine® Polish dries in 20-30 minutes; if more than one coat is desired, be sure to let each coat completely dry before applying another. **Keep in mind that 2-3 thin coats are better than one heavy coat.**

In time, it may be necessary to strip the old layers of DOMCO TARKETT SureShine® Polish and apply fresh coats. Strip the polish by using a high-quality wax/polish remover.

Important To The End User:

Information concerning installation and maintenance for NAFCO floors in a light commercial application is provided with each product. This information must be passed on to the end user upon completion of each installation.

MAINTENANCE

FOR NAFCO BEST LIVING FLOORS IN COMMERCIAL APPLICATIONS

NAFCO Best Living Series may be installed in conventional commercial environments. When this is done, we recommend a commercial-type maintenance procedure along with appropriate commercial maintenance products. DOMCO TARKETT does make available commercial grade floor maintenance products: a neutral cleaner, floor stripper, and floor polish in normal, matte and gloss versions. We recommend you use DOMCO TARKETT maintenance materials or products of equal quality for maintaining NAFCO Commercial Floorings.

When used commercially NAFCO Best Living products should be maintained with floor polish. After initial deep cleaning, the floor is then coated with 2-3 coats of polish. Subsequent maintenance should involve consistent dirt removal, damp mopping when needed, and spray buffing followed by an occasional re-coat of floor polish. At least once or twice a year, the floor should be stripped of all polishes and re-coated as a new floor. These procedures will help to ensure the beauty and durability of your NAFCO floor.

Maintaining Commercial Areas

All vinyl flooring requires effective cleaning and maintenance to ensure its durability, appearance, and safety. How frequently the floor must be maintained depends largely on the amount and type of traffic and the amount and frequency of soiling.

The type of floor and the color are also important. For example, solid-colored floors will show scuffs, scratches, dirt, and general wear more than multi-colored patterns. Likewise, lighter colors will show marks more than darker colors.

Although DOMCO TARKETT can make general recommendations, the local conditions will determine what specific maintenance is needed. It is the responsibility of the maintenance contractor to set up a maintenance program that meets the needs of the facility. For example, requirements in a 12th floor office suite will be significantly different from those in a supermarket or a restaurant dining area. An effective maintenance program should include:

1. Thorough dirt and grit regulation;
2. Prompt removal of spills and staining material; and
3. Protection of the floor surface.

There have been many improvements in chemical maintenance products, cleaning and buffing pad composition, maintenance machines and procedures. Intensive training programs by nationally known maintenance product manufacturers have significantly improved the expectations for overall protection and appearance of all vinyl tile floors. At the same time, cost per square foot for caring these floors in commercial areas has gone down. High quality maintenance of vinyl flooring is now easier than ever before.

Initial Deep Cleaning Procedure

1. Consult and follow application instructions on product labels.
2. Dust mop entire floor area and remove gum, tar, glue, etc. from floor.
3. Mix 4-6 ounces of DOMCO TARKETT Commercial Floor Cleaner with each gallon of warm water.
4. Dip mop in cleaning solution, let excess solution drain off and apply cleaner liberally to floor. Let cleaner set on floor several minutes before scrubbing. DO NOT FLOOD FLOOR.
5. Important: With blue or green pad or equivalent bristle brushes, pass over each tile section at least twice. Do not rush this procedure, it is crucial. If necessary, apply more solution to keep floor wet so that is wet at all times during the deep scrub procedure. Do not let solution dry under any conditions.
6. After a section is deep scrubbed, pick up the cleaning solution immediately with an automatic scrubber or clean mop with clear water. Rinse the floor clean and allow to dry.

Apply Floor Finishes

1. Pour DOMCO TARKETT Commercial Floor Polish into clean mop buckets.
2. Use new properly prepared or clean mops for applying floor finish.
3. Dip mop in floor finish, place mop in wringer and tamp lightly. The mop should be full but not dripping.
4. Apply the 2-3 thin coats of finish to floor. Under normal conditions, allow a minimum of 45 minutes drying time between coats. Ensure adequate drying time between coats. One or two additional thin coats of finish should be applied prior to opening the building for use.
5. Important: AC/Heat must be in operation to assure adequate drying time and curing of finish between coats. Temperature and humidity levels in the building will determine drying time.

CAUTION: Do not dry buff, spray buff, or burnish vinyl composition tile or asphalt tile floors without prior applications of an acrylic finish, which is resistant to neutral cleaners. Do not dry strip under any conditions. If followed closely, these procedures will prevent costly delays and unnecessary expenses.

Spray Buffing

Spray buffing is a common and effective method of commercial maintenance. If desired, this may be done by attaching a spray applicator or using a hand-held spray applicator and lightly spraying diluted DOMCO TARKETT Commercial Floor Polish (1 part polish to 3 parts warm water) or a commercially-formulated spray buff solution onto the floor. Buff the solution in before the liquid can dry. A thin, protective, glossy film remains after buffing the liquid dry, leaving the base coats intact and reducing the need for stripping. High traffic areas may require refresher coats more frequently.

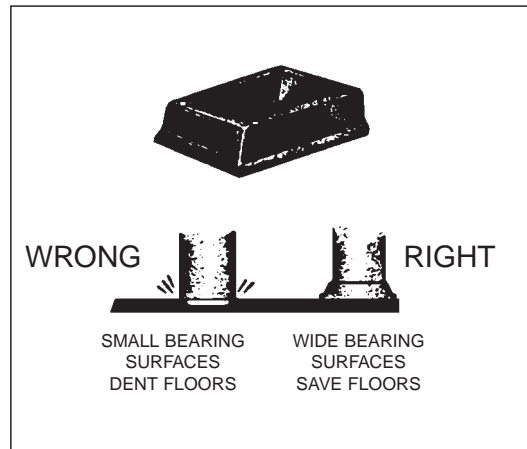
CAUTION: Make sure the power buffer is in good condition and may be used on wet floors safely. Make sure there is no exposed wiring and no danger from electrical shock.

GENERAL RECOMMENDATIONS

For Tables and Heavy Furniture Not Frequently Moved:

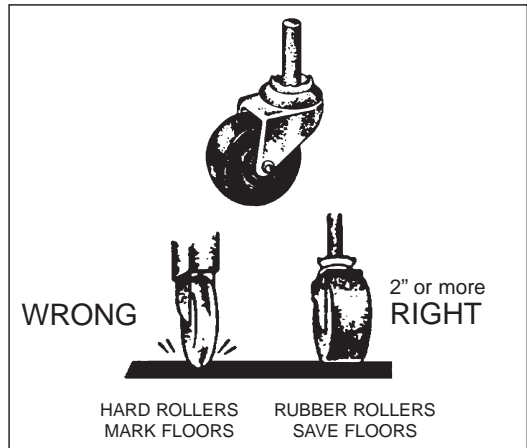
In order to prevent indentations and scratches, use glass, polished metal or other non-staining cups or casters with flat under surfaces. Flat under surfaces should not be less than 2" diameter for the legs of tables and heavy furniture or appliances. They are made with neutral colors and with openings of varying square and round sizes.

NOTE: Some factory installed rolling-type casters on furniture and appliances can damage resilient flooring. The suitability of using these casters rests solely with the furniture or appliance manufacturers; NAFCO does not warrant such items.



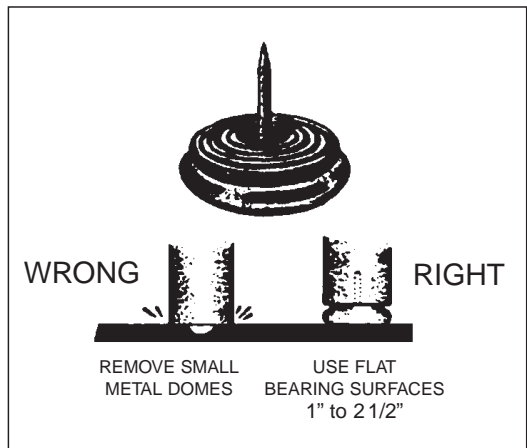
For Desk Chairs and Other Rolling Furniture:

Broad surface, non-staining casters or large diameter wheels (2" or more) should be used on office-type desk chairs or other rolling furniture. Wide, flat and soft non-staining rubber composition tread wheel casters or flat glides are recommended. Small diameter or narrow, hard wheel casters, particularly with a crowned tread and without ball swivels will unnecessarily and unduly mark resilient flooring. Consult your flooring contractor regarding the moving of heavier furniture, such as pianos, hand trucks, hospital beds, etc.



For Straight Chairs, Small Cabinets, Bar Stools, etc:

Flat, polished metal glides that have bearing surfaces not less than 1" diameter should be used on straight chairs, bar stools, etc. These glides should have rounded edges and a flexible pin to maintain flat contact with the floor. Small metal domes should be removed from the bottoms of all chair legs and replaced with the correct glides as mentioned.



Note:

The use of felt pads is **NOT** recommended because felt can trap dirt, sand, or other foreign matter and that can scratch your flooring from the movement of the chair and result in premature wear.



The following reference chart is a handy quick-guide on the DOMCO TARKETT maintenance products specially formulated for all NAFCO Flooring products. Detailed maintenance for each product type should be followed in conjunction with this chart.

DOMCO TARKETT

Residential Floor Care Products

	* FLOOR POLISH	NO RINSE CLEANER
Product	DOMCO TARKETT SureShine® Polish Long-Lasting, High Gloss & Matte Satin	DOMCO TARKETT SureShine® No-Rinse Cleaner
Product Codes*	F210 High Gloss F200 Matte Satin	F230
Use	Specially formulated by DOMCO TARKETT for use on NAFCO residential vinyl flooring. Recommended for use on all residential flooring	Specially formulated by DOMCO TARKETT for use on NAFCO residential flooring. Recommended for use on all residential flooring
Size/Packaging	Quart (0.946 Liter) 12 per carton	Quart (0.946 Liter) 12 per carton
Weight per Carton	29 lbs. (13.2 kg)	29 lbs. (13.2 kg)
Warning	<ul style="list-style-type: none"> • Do not take internally. • Keep out of reach of children. 	<ul style="list-style-type: none"> • Eye irritant. • Do not take internally. • Keep out of reach of children. • Do not use on solid wood or cork floors.
Features	<ul style="list-style-type: none"> • High & Matte Satin gloss acrylic polishes for desired look. • High solids content for excellent shine, protection & durability. • Self-leveling for easy application. • Detergent & abrasion resistant. • Matte Satin preserves natural appearances of NAFCO's stone & wood-look planks. 	<ul style="list-style-type: none"> * No-Rinse for No-Wax floors. • Neutral pH detergent. • Dilute to as low as 1/4 cup per gallon of water. • Easy to use.
Coverage	375-500 sq. ft. per quart	Up to 8 gallons per quart of concentrate

*Be certain that you choose the proper gloss level for your NAFCO flooring (high or matte satin gloss).

DIRECTIONS FOR USE

	FLOOR POLISH	NO RINSE CLEANER
Directions	<p><u>FLOOR PREPARATION:</u></p> <ul style="list-style-type: none"> • Sweep or vacuum thoroughly. • Wash with SureShine® No-Rinse Cleaner for no-wax floors. • Let dry completely. <p><u>POLISH APPLICATION:</u></p> <ul style="list-style-type: none"> • Apply a uniform coating using a damp sponge mop or polish applicator. • Try not to move the polish applicator over any portion of the floor more than once per coat. • Allow at least 30 minutes between coats. • On initial application, or after stripping, always apply at least 2-3 thin coats of SureShine® Polish. • Apply additional coats of polish as needed to maintain an acceptable level of appearance. <p><u>STRIPPING:</u></p> <ul style="list-style-type: none"> • SureShine® strips easily when using SureShine® Cleaner & Wax Remover. • Always rinse thoroughly with clear water after stripping. • Stripping should only be done as needed. 	<p><u>DAMP MOPPING:</u></p> <ul style="list-style-type: none"> • Use one cap full per gallon of water. • Rinsing is not required. <p><u>WASHING:</u></p> <ul style="list-style-type: none"> • Use 4-6 oz. per gallon of water. • Apply the cleaning solution liberally to a portion of the floor and allow it 1-2 minutes to soak. • Using a mop or scrub brush, scrub the area, then take up the excess solution. • Immediately rinse with clear water. • Allow to dry thoroughly.

All resilient floors need a regular cleaning program to retain a like-new appearance. The type and amount of traffic your floor receives will determine the frequency of maintenance.



No-Rinse Cleaner

SureShine® No-Rinse Cleaner for No-Wax Floors is a nearly neutral pH detergent designed for use at fairly high dilutions. It is low foaming, and won't attack floor polish. It can be diluted to as low as 1/4 cup per gallon of water.



Polish - Long-lasting, High Gloss

SureShine® High Gloss Polish is a high durability acrylic polish for restoring shine to residential floors. It contains 21% solids for excellent shine and protection, and is self leveling for easy application.



Polish - Long-Lasting, Matte Satin

SureShine® Matte Satin Polish is a high durability acrylic polish for restoring a satin lustre finish to residential floors. It has balanced weight for an excellent finish, and is self leveling for easy application.

All of these products have been specially formulated to be compatible with NAFCO Residential Flooring.

MSDS sheets are available for each of the maintenance and adhesive products and may be obtained by faxing a request to NAFCO Installation Services Department at 256-718-5277.

Note: If NAFCO Best Living products are used in commercial applications then commercial installation and maintenance guidelines must be followed.

MAINTENANCE FOR WALL BASE

This product has a non-porous solid vinyl wear surface that makes cleaning easy. Simply damp wipe with a soft cloth to remove light dirt and dust. Mild detergent and water may be necessary to clean areas that become severely dirty.

A cloth dampened with rubbing alcohol will help in removing scuff marks. Any excess adhesive that gets on the wall base surface during installation should be removed with soapy water. After the adhesive begins drying, a cloth dampened in mineral spirits may be necessary to remove it.

Avoid impact of wall installations with heavy maintenance equipment (floor buffing machines). This type of abuse/accidents can result in severe scuffing, gouging, and general surface damage.

The above-listed procedures apply to all NAFCO Supreme Wall Base solid colors.

STAIN REMOVAL INFORMATION

How to Remove Stains from Your NAFCO Floor:

1. If a spill is fresh, wipe it up immediately using a blotting action with a paper towel. Wash and rinse.
2. If the stain has set, remove it with a plastic spatula or something equivalent that will not scratch or damage the floor surface. Wash and rinse.
3. Wash the stain with a clean, white cloth dipped in clear water. Repeat several times, turning the cloth frequently.
4. Wash the stain with a clean, white cloth dipped in a mild solution of DOMCO TARKETT SureShine® Cleaner. Rinse well.
5. Wipe the stain with a clean, white cloth moistened with full strength DOMCO TARKETT SureShine® Cleaner. Rinse well.
6. Lightly moisten a clean, white cloth with lighter fluid, taking all necessary precautions against fire, and wipe over the stains. Do only a small area at a time. When dry, wash with DOMCO TARKETT SureShine® Cleaner. Rinse well.
7. Rub the stain with a nylon pad (the type used for cleaning non-stick pots and pans) dampened with full strength DOMCO TARKETT SureShine® Cleaner.
8. Dust the stain with household cleansing powder and rub lightly with a nylon pad (the type used for cleaning non-stick pots and pans) or with a clean, white cloth dampened in a mild solution of DOMCO TARKETT SureShine® Cleaner.
9. Rub the stain gently with a clean, white cloth dampened lightly with alcohol, taking all necessary precautions against fire. Do only a small area a time. When dry, wash with DOMCO TARKETT SureShine® Cleaner. Rinse well.
10. Do not walk on the treated area until it is completely dry. Buff.

For tough stains or dirt build-up, we recommend a high-quality wax/polish remover. Follow the recommended procedures from the manufacturer.

STAIN REMOVAL CHART

Here are some of the most common household stains and their recommended removal procedures. Refer to procedure numbers above.

Stain	Procedures To Use
Tar, grease, oil	2, 5, 6, 10
Candle wax, chewing gum	2, 5, 8, 10
Rubber heel marks, shoe polish	7, 8, 10
Coffee stains, alcohol	1, 4, 10
Beverages, fruit juice, ink, iodine, mustard, keetchup	7, 8, 10
Cigarette burns, rust, mildew, dye, blood, grass	7, 8, 10
Paint, varnish, solvents	1, 5, 10 or 7, 8, 10
Shellac	1, 5, 10 or 2, 7, 8, 10
Nail polish, lacquer, nail polish remover, dry cleaning fluids	1, 5, 10 or 2, 7, 8, 10
Acids, alkalis, lye, drain cleaners, strong soaps, cleaners, detergents	1, 3, 7, 10

ARCHITECTURAL SPECIFICATIONS

Best Living Series

Luxury Vinyl Tile-20 mil

Product	Size	Gauge	Indentation resistance in lbs. Per Sq. Inch	*Recommended Subfloors/Adhesives
Crestview Plank	3" x 36"	.125"	500	DOMCO TARKETT 400
Madras Slate	12" x 12"	.125"	500	DOMCO TARKETT 800
Roman Stone	12" x 12"	.125"	500	DOMCO TARKETT 800

*On radiant heated floors, we only recommend the use of DOMCO TARKETT 400 Acrylic Hard-Set Adhesive.

NAFCO Luxury (Solid Vinyl) Tile is produced in .125 gauge, in various sizes and complies with the performance requirements of Federal Specification ASTM F1700, Class III, Type B (replacing SS-T-312B, Type III-Vinyl). Minimum static load limit of 500 PSI per ASTM F970; these product formulations do not contain asbestos.

NAFCO Luxury Vinyl Tile is manufactured to have a smoke development of less than 450 in accordance with ASTM E-662. It has been tested under ASTM E-648 (Federal Test Method 372 - Flooring Radiant Flux) of more than 0.45. This also qualifies it for a Class I rating. This data was obtained from tests performed by an independent laboratory.

NAFCO Luxury (Solid Vinyl) Tile meets the requirements of an "Article" as set forth in Title 29, CFR 1910.1200 HAZARD COMMUNICATION(s). These products are (i) formed to a specific shape or design during manufacture, (ii) have end use function dependent upon their shape or design during end use, and (iii) do not release any hazardous chemical under normal condition of use.

Install in accordance with recommendations set forth in this manual. Read and follow cautions set forth on recommended adhesive labels.

Wall Base Data

Physical Characteristics				Recommended Subfloors/Adhesives	Abridged Specifications
Type	Size	Gauge	Indentation Resistance lbs./sq. in.	For acceptable Substrates Please Consult this manual on page 20	Product/Material
Vinyl	4" x 48" 4" x 120' 4" Inside corner 4" Outside Corner	.080" or 1/8"	N/A	DOMCO TARKETT 700 Wall Base Adhesive	Provide first-quality NAFCO precision molded covered Vinyl Wall Base with a gauge of 1/8" or .080", height of 4", and in lengths of 48" or 120'. Material shall meet the following standards: ASTM F-1861-98, Type TP, Goup 2; ASTM E-84 NFPA-255.
Rubber	4" x 48" 4" x 120' 4" Inside corner 4" Outside Corner	1/8"	N/A	DOMCO TARKETT 700 Wall Base Adhesive	Provide first-quality NAFCO precision molded covered Rubber Wall Base with a gauge of 1/8", height of 4", and in lengths of 48" or 120'. Material shall meet the following standards: ASTM F-1861-98, Type TP, Goup 2; ASTM E-84 NFPA-255.

EXTREME PERFORMANCE WARRANTY (RESIDENTIAL)

NAFCO luxury vinyl flooring always means Extreme Performance. This warranty assures you that your new floor will not rip, tear or gouge from normal household use; will not wear through* or permanently indent; and will not discolor from moisture** or permanently stain from common household stains or traffic stains (including asphalt driveway sealer). Also, your new floor will not contain manufacturing defects and will not permanently scuff from shoe soles.

WARRANTY EXCLUSIONS:

The EXP warranty specifically excludes the following:

- Products sold other than first quality.
- Variation in color shading and/or embossing between the product sold and samples, or color match that is different from production lot.

Installation:

- Products replaced or repaired by others without prior written consent from the manufacturer.
- Dissatisfaction due to flooring installed with visible defects, or not in accordance with NAFCO recommended installation procedures, including problems caused by or contributed to by use of non-recommended adhesives, seam sealer, gypsum based products, underlayment and/or improper preparation of the substrate.

Moisture:

- Discoloration due to excessive moisture caused by flooding or water leakage.

Damages:

- Damages caused by household accidents (such as pipe leaking, flooding or fire), abuse (such as damage or indentations from boots, spikes, high stiletto heels, rolling casters and unprotected furniture legs), extreme sunlight exposure and discoloration from excessive heat. Damage or failure due to circumstances beyond the control of NAFCO.

Floor care:

- Dissatisfaction due to improper maintenance caused by or contributed to floor care products not recommended, loss of gloss, dulling and/or fading. Note: If a floor receives hard use and becomes soiled, use DOMCO TARKETT SureShine® Cleaner.
- Discoloration caused by the use of floor mats (latex or rubber backed).
- Staining from common household stains, including asphalt driveway sealer, unless specifically stated as being covered in the warranties.

The remedies set forth here in are the sole remedies available under this warranty. Under no circumstances shall NAFCO be liable for incidental or consequential damages arising out of breach of this warranty, without limitation, any loss of use of the premises, inconvenience and other loss. Some provinces and states do not allow the exclusion, or limitation of exclusion may not apply to you. This warranty applies to floors purchased after March 1, 2000.

The warranties give you specific legal rights and you may also have other rights, which vary from province to province and state to state.

* "Wear through" is defined as loss of the floor design due to normal use.

** One time replacement only.

Details:

From time to time, there are things that need to be worked out. If you have a complaint about your new NAFCO floor, contact your retailer first. If the retailer is not available, please notify NAFCO in writing: Attention: Installation Services, P.O. Box 354, Florence, AL, USA 35631. For our commercial warranty, please call Technical Services at 1-800-366-2689.



Best Living Collection – 30 years
(10-year commercial):

Madras Slate, Roman Stone,
Crestview Plank



Better Living Collection – 20 years
(5-year light commercial):

Milestone, Elements, PermaStone,
Crackled Porcelain, Custom Quarry,
Victorian Marble, Amherst Marble,
Flections, Navona Stone, Brook
Pebbles, Breccia Carsica, Majestic
Slate, Designer Slate, Augusta Plank,
Antique Plank, Classic Plank,
Lorraine Oak, Highland Oak, Jackson
Pecan, Dorchester Plank, PermaStone



Good Living Collection – 15 years:

Slate, Stone, Wood



FREQUENTLY ASKED QUESTIONS (FAQ'S)

Q: How do I maintain my new NAFCO floor?

A: We suggest the use of our DOMCO TARKETT SureShine® products. In the DOMCO TARKETT SureShine® product line, we have cleaner, and both high-gloss and matte-satin polishes. We believe you will be well satisfied with the performance of these products; they will keep your flooring looking new for many years to come.

Q: What kind of wood underlayment is approved by NAFCO?

A: NAFCO recommends a minimum of 1/4-inch American Plywood Association (APA) approved plywood be used; this is the best underlayment for our products. We also allow the use of lauan, but it must be exterior grade, Type 1 Exterior that has a fully water-proof glue bond. The acceptable types are designated with the letter "P" and the acceptable face grades are "CC" and "BB".

Q: How do I remove dried adhesive from my new NAFCO flooring without harming it?

A: It would have been a relatively easy task to use a cloth dampened with water to remove wet adhesive from your flooring. However, now that the adhesive is dry, a cloth dampened in mineral spirits will have to be used to remove it. The areas where the adhesive was removed should then immediately be rinsed clean with water.

Q: What kind of protectors do I need to put on the bottom of my dining room chairs?

A: We have found that flat, polished metal glides at least one-inch in diameter provide the best protection for vinyl flooring. They can not trap dirt in them as felt pads would and the metal glides will glide across the surface of the tile; they do not dig into the floor surface as some plastic type glides do.

Q: What type of mats or throw rugs may be used on my NAFCO flooring that will not cause a stain?

A: It is best to check with the rug/mat manufacturer to provide you with information as to whether their products will stain vinyl. We can tell you that rubber-backed mats will stain vinyl, so those types should be avoided.

Q: Where may I obtain copies of maintenance or warranty information if they did not come in my box of tile?

A: You should be able to obtain maintenance and warranty information from your retailer or distributor. However, if they do not have copies of this information, you may call 800-248-5574 and request a single copy be sent to you.

Q: I need a list of dealers in my area where I can purchase NAFCO. Where can I obtain this list?

A: Please go to our website (www.nafco.com) and click on the Dealer Locator link. After you put in your zip code, a list of dealers for your area will pull up.

Q: I have dark scuffmarks on my NAFCO flooring that normal, everyday cleaning will not remove. How would I remove those marks?

A: We recommend wiping the affected areas with a cloth dampened in mineral spirits. You should then immediately rinse those areas with water to remove any residue.

Q: Even though your NAFCO Quick Stik products have adhesive factory applied to the back of the tiles, can I use additional adhesive?

A: Yes, you may use DOMCO TARKETT 800 adhesive with Quick Stik tiles if you prefer. Our Quick Stik products are designed with the do-it-yourselfer in mind and have a good quality adhesive applied. No other adhesive is necessary for a successful installation.

Q: Is it really necessary to roll all NAFCO installations?

A: Yes, every NAFCO installation should be rolled with a 100-pound, three-part roller. A hand roller should be used in areas where the larger roller will not reach. Rolling the flooring will ensure that the adhesive ridges are flattened and any entrapped air is expelled, thereby ensuring a good, proper bond.

Q: How may I obtain MSDS sheets, specifications sheets, or technical information on your NAFCO products?

A: You may fax your request to the NAFCO Installation Services Department at 256-718-5277 and the information will be promptly faxed to you.

Q: May I contact the manufacturer on-line with questions?

A: Yes, we welcome your comments! Please go to WWW.NAFCO.COM and click on the links that will help you the most. There is also a link that will contact us directly. Replies are sent back to you as soon as possible.

BEAUTIFUL
DURABLE
AFFORDABLE
NAFCO
LUXURY VINYL
FLOORING

